

SMCHD1 polyclonal antibody

Catalog: BS8781

Host: Rabbit

Reactivity: Human, Mouse, Rat

BackGround:

This gene encodes a protein which contains a hinge region domain found in members of the SMC (structural maintenance of chromosomes) protein family.

Product:

1mg/ml in PBS with 0.1% Sodium Azide, 50% Glycerol.

Molecular Weight:

~ 226kDa

Swiss-Prot:

A6NHR9

Purification&Purity:

The antibody was affinity-purified from rabbit antiserum by affinity-chromatography using epitope-specific immunogen and the purity is > 95% (by SDS-PAGE).

Applications:

WB: 1:500~1:2000

IF: 1:50~1:200

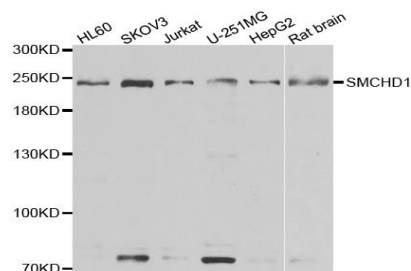
Storage&Stability:

Store at 4 °C short term. Aliquot and store at -20 °C long term. Avoid freeze-thaw cycles.

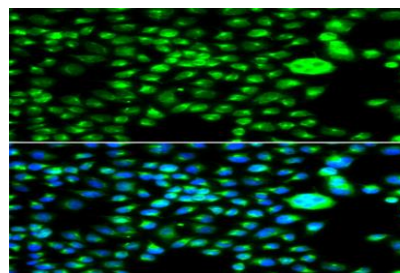
Specificity:

SMCHD1 polyclonal antibody detects endogenous levels of SMCHD1 protein.

DATA:



Western blot analysis of extracts of various cell lines, using SMCHD1 antibody.



Immunofluorescence analysis of MCF7 cell using SMCHD1 antibody.
Blue: DAPI for nuclear staining.

Note:

For research use only, not for use in diagnostic procedure.

Bioworld Technology, Inc.

Add: 1660 South Highway 100, Suite 500 St. Louis Park, MN 55416, USA.

Email: info@bioworld.com

Tel: 6123263284

Fax: 6122933841

Bioworld technology, co. Ltd.

Add: No 9, weidi road Qixia District Nanjing, 210046, P. R. China.

Email: info@biogot.com

Tel: 0086-025-68037686

Fax: 0086-025-68035151