

## RASGRF1 polyclonal antibody

Catalog: BS8617

Host: Rabbit

Reactivity: Human, Mouse

### BackGround:

A critical step in signal transduction responses to stimulation of cell surface receptors by their ligands involves the accumulation of Ras proteins in their active GTP-bound state. To reach their active GTP-bound state, Ras proteins must first release bound GDP, a rate limiting step mediated by a guanine nucleotide releasing factor (GRF). The mammalian Ras p21 GRF protein has been designated Ras-GRF1 p140. Ras-GRF1 accelerates release of GDP from H- and N-Ras p21 protein in vitro, but not from the related Ral A or Cdc42Hs GTP-binding proteins. Ras-GRF2 p135 is highly homologous to Ras-GRF1 p140 except in the region between the REM and CDC25 domains and appears to function similarly to Ras-GRF1 p140.

### Product:

1mg/ml in PBS with 0.1% Sodium Azide, 50% Glycerol.

### Molecular Weight:

~ 145kDa

### Swiss-Prot:

Q13972

### Purification&Purity:

The antibody was affinity-purified from rabbit antiserum by affinity-chromatography using epitope-specific immunogen and the purity is > 95% (by SDS-PAGE).

### Applications:

WB: 1:500~1:2000

IHC: 1:50~1:200

IF: 1:50~1:200

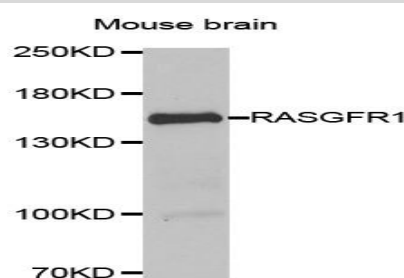
### Storage&Stability:

Store at 4 °C short term. Aliquot and store at -20 °C long term. Avoid freeze-thaw cycles.

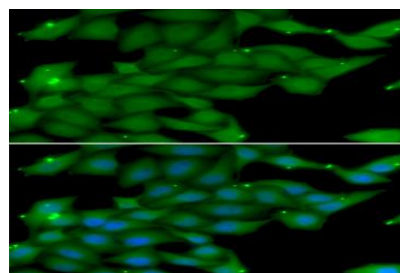
### Specificity:

RASGRF1 polyclonal antibody detects endogenous levels of RASGRF1 protein.

### DATA:



Western blot analysis of extract of Mouse brain, using RASGRF1 antibody.



Immunofluorescence analysis of U20S cell using RASGRF1 antibody.  
Blue: DAPI for nuclear staining.

### Note:

For research use only, not for use in diagnostic procedure.

### Bioworld Technology, Inc.

Add: 1660 South Highway 100, Suite 500 St. Louis Park, MN 55416, USA.

Email: [info@bioworld.com](mailto:info@bioworld.com)

Tel: 6123263284

Fax: 6122933841

### Bioworld technology, co. Ltd.

Add: No 9, weidi road Qixia District Nanjing, 210046, P. R. China.

Email: [info@biogot.com](mailto:info@biogot.com)

Tel: 0086-025-68037686

Fax: 0086-025-68035151