

NIPP1 polyclonal antibody

Catalog: BS8541

Host: Rabbit

Reactivity: Human, Mouse, Rat

BackGround:

NIPP1 (nuclear inhibitor of protein phosphatase 1) is a putative transcription regulator that may be involved in pre-mRNA splicing and cell proliferation. NIPP1 contains a nuclear signaling region named FHA (fork-head associated) domain. The FHA domain has been associated with protein kinases and transcription factors. The NIPP1 locus encodes for three different isoforms termed α , β and γ due to alternative splicing events. The isoforms exhibit RNA binding activity and also act as phosphatase inhibitors. The γ isoform is believed to be a magnesium dependent endoribonuclease that is responsible for cleaving RNA strands. It is mainly found in B cells and T lymphocytes. The α and β isoforms are localized in the brain and kidney. Inactivation of NIPP1 is accomplished by the phosphorylation of Ser 199 or Ser 204. NIPP1 interacts with proteins CDc5L, SAP 155, MELK and EED.

Product:

1mg/ml in PBS with 0.1% Sodium Azide, 50% Glycerol.

Molecular Weight:

~ 38kDa

Swiss-Prot:

Q12972

Purification&Purity:

The antibody was affinity-purified from rabbit antiserum by affinity-chromatography using epitope-specific im-

munogen and the purity is > 95% (by SDS-PAGE).

Applications:

WB: 1:500~1:2000

IHC/IF: 1:50~1:200

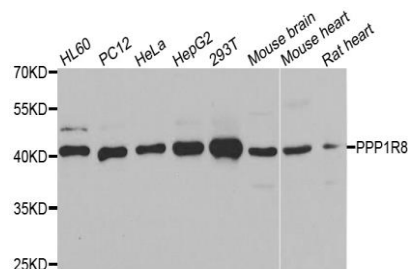
Storage&Stability:

Store at 4 °C short term. Aliquot and store at -20 °C long term. Avoid freeze-thaw cycles.

Specificity:

NIPP1 polyclonal antibody detects endogenous levels of NIPP1 protein.

DATA:



Western blot analysis of extracts of various cell lines, using PPP1R8 antibody.

Note:

For research use only, not for use in diagnostic procedure.

Bioworld Technology, Inc.

Add: 1660 South Highway 100, Suite 500 St. Louis Park, MN 55416, USA.

Email: info@bioworld.com

Tel: 6123263284

Fax: 6122933841

Bioworld technology, co. Ltd.

Add: No 9, weidi road Qixia District Nanjing, 210046, P. R. China.

Email: info@biogot.com

Tel: 0086-025-68037686

Fax: 0086-025-68035151