

## QPCT polyclonal antibody

Catalog: BS8375

Host: Rabbit

Reactivity: Human, Mouse, Rat

### BackGround:

QPCT (glutaminyl-peptide cyclotransferase) is a 361 amino acid protein that belongs to the glutaminyl-peptide cyclotransferase family. QPCT is responsible for the presence of pyroglutamyl residues in many neuroendocrine peptides. QPCT binds one zinc ion per subunit and has a bias against acidic and tryptophan residues adjacent to the N-terminal glutaminyl residue. The human QPCT gene shares 86% overall sequence identity with the bovine homolog. QPCT contains an N-terminal signal peptide region, several glycosylation and phosphorylation sites and two cysteine residues conserved between the bovine and human enzymes. Existing as two alternatively spliced isoforms, the QPCT gene is conserved in chimpanzee, dog, cow, mouse, rat, chicken, fruit fly, mosquito, M.grisea and N.crassa, and maps to human chromosome 2p22.2.

### Product:

1mg/ml in PBS with 0.1% Sodium Azide, 50% Glycerol.

### Molecular Weight:

~ 41 kDa

### Swiss-Prot:

Q16769

### Purification&Purity:

The antibody was affinity-purified from rabbit antiserum by affinity-chromatography using epitope-specific immunogen and the purity is > 95% (by SDS-PAGE).

### Applications:

WB: 1:500~1:2000

IF: 1:50~1:200

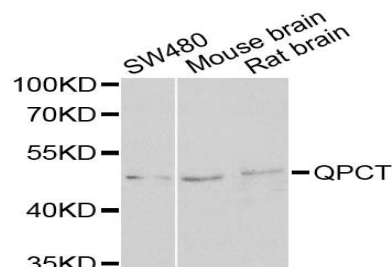
### Storage&Stability:

Store at 4 °C short term. Aliquot and store at -20 °C long term. Avoid freeze-thaw cycles.

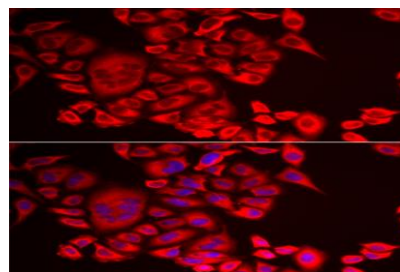
### Specificity:

QPCT polyclonal antibody detects endogenous levels of QPCT protein.

### DATA:



Western blot analysis of extracts of various cell lines, using QPCT antibody.



Immunofluorescence analysis of MCF-7 cells using QPCT antibody.

### Note:

For research use only, not for use in diagnostic procedure.

### Bioworld Technology, Inc.

Add: 1660 South Highway 100, Suite 500 St. Louis Park, MN 55416, USA.

Email: [info@bioworld.com](mailto:info@bioworld.com)

Tel: 6123263284

Fax: 6122933841

### Bioworld technology, co. Ltd.

Add: No 9, weidi road Qixia District Nanjing, 210046, P. R. China.

Email: [info@biogot.com](mailto:info@biogot.com)

Tel: 0086-025-68037686

Fax: 0086-025-68035151