

## PTRH2 polyclonal antibody

Catalog: BS8239

Host: Rabbit

Reactivity: Human, Mouse, Rat

### BackGround:

PTRH2 (peptidyl-tRNA hydrolase 2), also known as BIT1 (Bcl-2 inhibitor of transcription 1), is a 179 amino acid mitochondrial protein. During apoptosis, PTRH2 is released from the mitochondria to the cytoplasm. Once in the cytoplasm, PTRH2 regulates the function of two transcriptional regulators, TLE5 and TLE1, thereby promoting caspase-independent cell death. It is also believed that the natural substrate for PTRH2 may be peptidyl-tRNAs, which leave the ribosomes during protein synthesis. PTRH2 is a monomer that contains a N-terminal mitochondrial localization signal and a C-terminal UPF0099 domain.

### Product:

1mg/ml in PBS with 0.1% Sodium Azide, 50% Glycerol.

### Molecular Weight:

~ 19 kDa

### Swiss-Prot:

Q9Y3E5

### Purification&Purity:

The antibody was affinity-purified from rabbit antiserum by affinity-chromatography using epitope-specific immunogen and the purity is > 95% (by SDS-PAGE).

### Applications:

WB: 1:500~1:2000

IHC/IF: 1:50~1:200

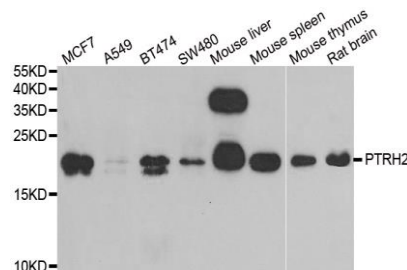
### Storage&Stability:

Store at 4 °C short term. Aliquot and store at -20 °C long term. Avoid freeze-thaw cycles.

### Specificity:

PTRH2 polyclonal antibody detects endogenous levels of PTRH2 protein.

### DATA:



WesternBlot (WB) analysis of PTRH2 polyclonal antibody

### Note:

For research use only, not for use in diagnostic procedure.

### Bioworld Technology, Inc.

Add: 1660 South Highway 100, Suite 500 St. Louis Park, MN 55416, USA.

Email: [info@bioworld.com](mailto:info@bioworld.com)

Tel: 6123263284

Fax: 6122933841

### Bioworld technology, co. Ltd.

Add: No 9, weidi road Qixia District Nanjing, 210046, P. R. China.

Email: [info@biogot.com](mailto:info@biogot.com)

Tel: 0086-025-68037686

Fax: 0086-025-68035151