

UBE3C polyclonal antibody

Catalog: BS8220

Host: Rabbit

Reactivity: Human

BackGround:

E3 ubiquitin ligases are a large family of proteins that are engaged in the regulation of the turnover and activity of many target proteins and are classified into three major structurally distinct types: N-end rule E3s, E3s containing the HECT (homology to E6AP C-Terminus) domain and E3s with the RING finger. UBE3C (ubiquitin protein ligase E3C), is a 1083 amino acid nuclear protein that contains one HECT domain and one IQ domain. Existing as three isoforms due to alternative splicing events, UBE3C is highly expressed in skeletal muscle and expressed at much lower levels in kidney and pancreas. UBE3C is a E3 ubiquitin-protein ligase that accepts ubiquitin from UBE2D1 (ubiquitin-conjugating enzyme E2 D1) in the form of a thioester and then directly transfers the ubiquitin to targeted substrates. UBE3C can target itself for ubiquitination in vitro and may promote its own degradation in vivo.

Product:

1mg/ml in PBS with 0.1% Sodium Azide, 50% Glycerol.

Molecular Weight:

~ 124 kDa

Swiss-Prot:

Q15386

Purification&Purity:

The antibody was affinity-purified from rabbit antiserum by affinity-chromatography using epitope-specific immunogen and the purity is > 95% (by SDS-PAGE).

Applications:

WB: 1:500~1:2000

IHC/IF: 1:50~1:200

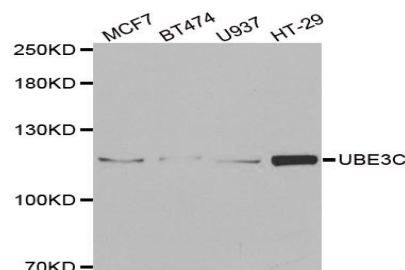
Storage&Stability:

Store at 4 °C short term. Aliquot and store at -20 °C long term. Avoid freeze-thaw cycles.

Specificity:

UBE3C polyclonal antibody detects endogenous levels of UBE3C protein.

DATA:



WesternBlot (WB) analysis of UBE3C polyclonal antibody

Note:

For research use only, not for use in diagnostic procedure.

Bioworld Technology, Inc.

Add: 1660 South Highway 100, Suite 500 St. Louis Park, MN 55416, USA.

Email: info@bioworld.com

Tel: 6123263284

Fax: 6122933841

Bioworld technology, co. Ltd.

Add: No 9, weidi road Qixia District Nanjing, 210046, P. R. China.

Email: info@biogol.com

Tel: 0086-025-68037686

Fax: 0086-025-68035151