

## RPL9 polyclonal antibody

Catalog: BS8193

Host: Rabbit

Reactivity: Human, Mouse, Rat

### BackGround:

Ribosomes, the organelles that catalyze protein synthesis, are composed of a small subunit (40S) and a large subunit (60S) that consist of over 80 distinct ribosomal proteins. Mammalian ribosomal proteins are encoded by multigene families that contain processed pseudogenes and one functional intron-containing gene within their coding regions. Ribosomal Protein L9, also known as RPL9, is a 192 amino acid protein that is a component of the 60S subunit. Localized to the cytoplasm and expressed ubiquitously, Ribosomal Protein L9 belongs to the L6P family of ribosomal proteins and functions in protein synthesis. Like most ribosomal proteins, Ribosomal Protein L9 exists as multiple processed pseudogenes that are scattered throughout the genome. Due to alternative splicing events, Ribosomal Protein L9 is expressed as two isoforms.

### Product:

1mg/ml in PBS with 0.1% Sodium Azide, 50% Glycerol.

### Molecular Weight:

~ 22 kDa

### Swiss-Prot:

P32969

### Purification&Purity:

The antibody was affinity-purified from rabbit antiserum by affinity-chromatography using epitope-specific im-

munogen and the purity is > 95% (by SDS-PAGE).

### Applications:

WB 1:500 - 1:2000

IHC 1:50 - 1:200

IF 1:50 - 1:200

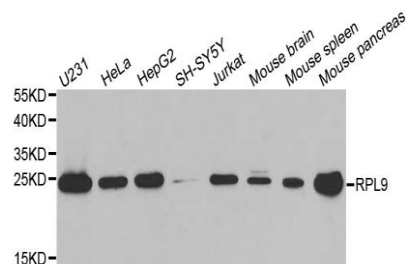
### Storage&Stability:

Store at 4 °C short term. Aliquot and store at -20 °C long term. Avoid freeze-thaw cycles.

### Specificity:

RPL9 polyclonal antibody detects endogenous levels of RPL9 protein.

### DATA:



WesternBlot (WB) analysis of RPL9 polyclonal antibody

### Note:

For research use only, not for use in diagnostic procedure.

### Bioworld Technology, Inc.

Add: 1660 South Highway 100, Suite 500 St. Louis Park, MN 55416, USA.

Email: [info@bioworld.com](mailto:info@bioworld.com)

Tel: 6123263284

Fax: 6122933841

### Bioworld technology, co. Ltd.

Add: No 9, weidi road Qixia District Nanjing, 210046, P. R. China.

Email: [info@biogot.com](mailto:info@biogot.com)

Tel: 0086-025-68037686

Fax: 0086-025-68035151