

PSG1 polyclonal antibody

Catalog: BS8187

Host: Rabbit

Reactivity: Human

BackGround:

Pregnancy specific glycoprotein 1 (PSG1), also designated CD66f, is a member of the PSG family, a group of closely related secreted glycoproteins that are highly expressed in fetal placental syncytiotrophoblast cells. The members of the PSG protein family all have a characteristic N-terminal domain that is homologous to the immunoglobulin variable region. PSGs become detectable in serum during the first two to three weeks of pregnancy and increase as the pregnancy progresses, eventually representing the most abundant fetal protein in the maternal blood at term. PSGs function to stimulate secretion of TH2-type cytokines from monocytes, and they may also modulate the maternal immune system during pregnancy, thereby protecting the semi-allotypic fetus from rejection. PSGs are commonly expressed in trophoblast tumors. 11 human PSG proteins (PSG1-PSG11) have been described.

Product:

Rabbit IgG, 1mg/ml in PBS with 0.02% sodium azide, 50% glycerol, pH7.2

Molecular Weight:

~ 55-72 kDa

Swiss-Prot:

P11464

Purification&Purity:

The antibody was affinity-purified from rabbit antiserum by affinity-chromatography using epitope-specific immunogen and the purity is > 95% (by SDS-PAGE).

Applications:

WB: 1:500 - 1:2000

IHC: 1:50 - 1:100

IF: 1:50 - 1:200

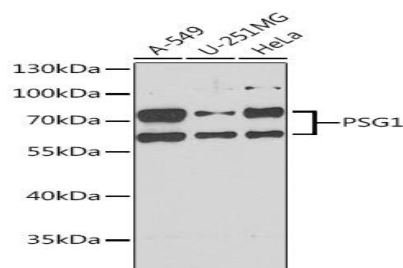
Storage&Stability:

Store at 4 °C short term. Aliquot and store at -20 °C long term. Avoid freeze-thaw cycles.

Specificity:

Recombinant fusion protein containing a sequence corresponding to amino acids 180-419 of human PSG1

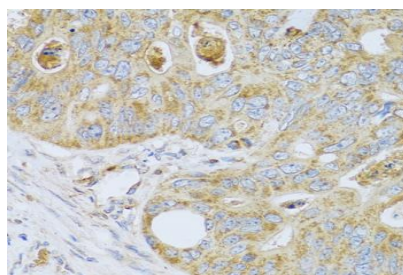
DATA:



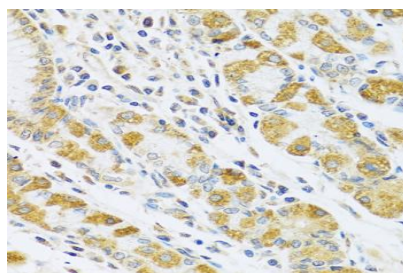
Western blot analysis of extracts of various cell lines, using PSG1 antibody at 1:1000 dilution.

Lysates/proteins: 40ug per lane.

Exposure time: 90s.



Immunohistochemistry of paraffin-embedded human colon carcinoma using PSG1 antibody at dilution of 1:100 (40x lens).



Immunohistochemistry of paraffin-embedded human stomach using PSG1 antibody at dilution of 1:100 (40x lens).

Bioworld Technology, Inc.

Add: 1660 South Highway 100, Suite 500 St. Louis Park, MN 55416, USA.

Email: info@bioworld.com

Tel: 6123263284

Fax: 6122933841

Bioworld technology, co. Ltd.

Add: No 9, weidi road Qixia District Nanjing, 210046, P. R. China.

Email: info@biogot.com

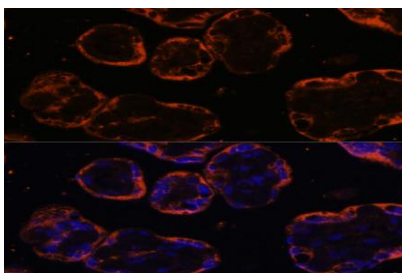
Tel: 0086-025-68037686

Fax: 0086-025-68035151



PRODUCT DATA SHEET

Bioworld Technology, Inc.



Immunofluorescence - PSG1 Rabbit pAb

Note:

For research use only, not for use in diagnostic procedure.

Bioworld Technology, Inc.

Add: 1660 South Highway 100, Suite 500 St. Louis Park,
MN 55416, USA.

Email: info@bioworld.com

Tel: 6123263284

Fax: 6122933841

Bioworld technology, co. Ltd.

Add: No 9, weidi road Qixia District Nanjing, 210046,
P. R. China.

Email: info@biogot.com

Tel: 0086-025-68037686

Fax: 0086-025-68035151