

SNRPB polyclonal antibody

Catalog: BS8064

Host: Rabbit

Reactivity: Human, Mouse

BackGround:

mRNA precursors are processed in the spliceosome, where introns are excised to form continuous coding sequences. The major components of the spliceosome are RNA-protein complexes called snRNPs (small nuclear ribonucleoprotein particles). The core proteins that are common to all snRNPs are called the Sm proteins, and are designated B, B', D1, D2, D3, E, F and G. Antibodies recognizing Sm proteins are frequently generated in autoimmune diseases, including in patients with systemic lupus erythematosus. Sm proteins are characterized by a conserved Sm sequence motif in two parts, Sm1 and Sm2, which are separated by a variable region.

Product:

1mg/ml in PBS with 0.1% Sodium Azide, 50% Glycerol.

Molecular Weight:

~ 25 kDa

Swiss-Prot:

P14678

Purification&Purity:

The antibody was affinity-purified from rabbit antiserum by affinity-chromatography using epitope-specific immunogen and the purity is > 95% (by SDS-PAGE).

Applications:

WB 1:500 - 1:2000

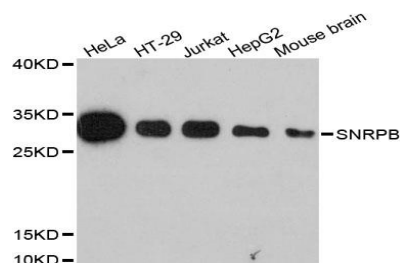
Storage&Stability:

Store at 4 °C short term. Aliquot and store at -20 °C long term. Avoid freeze-thaw cycles.

Specificity:

SNRPB polyclonal antibody detects endogenous levels of SNRPB protein.

DATA:



Western blot analysis of extracts of various cell lines, using SNRPB antibody at 1:3000 dilution.

Note:

For research use only, not for use in diagnostic procedure.

Bioworld Technology, Inc.

Add: 1660 South Highway 100, Suite 500 St. Louis Park, MN 55416, USA.

Email: info@bioworld.com

Tel: 6123263284

Fax: 6122933841

Bioworld technology, co. Ltd.

Add: No 9, weidi road Qixia District Nanjing, 210046, P. R. China.

Email: info@biogot.com

Tel: 0086-025-68037686

Fax: 0086-025-68035151