

NF- κ B p65/RelA polyclonal antibody

Catalog: BS80327

Host: Rabbit

Reactivity: Human, Mouse, Rat

Background:

Transcription factors of the nuclear factor κ B (NF- κ B)/Rel family play a pivotal role in inflammatory and immune responses. There are five family members in mammals: RelA, c-Rel, RelB, NF- κ B1 (p105/p50), and NF- κ B2 (p100/p52). Both p105 and p100 are proteolytically processed by the proteasome to produce p50 and p52, respectively. Rel proteins bind p50 and p52 to form dimeric complexes that bind DNA and regulate transcription. In unstimulated cells, NF- κ B is sequestered in the cytoplasm by I κ B inhibitory proteins. NF- κ B-activating agents can induce the phosphorylation of I κ B proteins, targeting them for rapid degradation through the ubiquitin-proteasome pathway and releasing NF- κ B to enter the nucleus where it regulates gene expression. NIK and IKK α (IKK1) regulate the phosphorylation and processing of NF- κ B2 (p100) to produce p52, which translocates to the nucleus.

Product:

Rabbit IgG, 1mg/ml in PBS with 0.02% sodium azide, 50% glycerol, pH7.2

Molecular Weight:

~ 65 kDa

Swiss-Prot:

Q04206

Purification&Purity:

The antibody was affinity-purified from rabbit antiserum by affinity-chromatography using epitope-specific immunogen and the purity is > 95% (by SDS-PAGE).

Applications:

WB: 1:500~1:1000

IP: 1:50~1:200

IF/IHC: 1:50~1:200

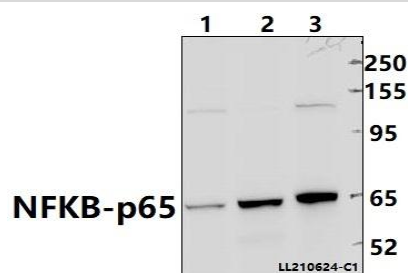
Storage&Stability:

Store at 4 °C short term. Aliquot and store at -20 °C long term. Avoid freeze-thaw cycles.

Specificity:

NF- κ B p65/RelA polyclonal antibody detects endogenous lev-els of NF- κ B p65/RelA protein.

DATA:

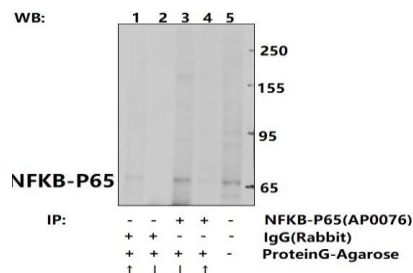


Western blot (WB) analysis of NFKB-p65 polyclonal antibody at 1:500 dilution

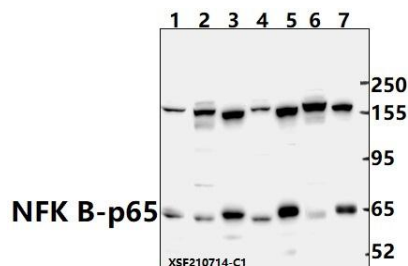
Lane1:A549 whole cell lysate(40ug)

Lane2:U-87MG whole cell lysate(40ug)

Lane3:MCF-7 whole cell lysate(40ug)



Immunoprecipitation of A549 cell lysates using NFKB-p65 pAb (Sepharose Bead Conjugate)#BD0048 (lane 3 and lane 4) and Nonspecific IgG Control (Sepharose Bead Conjugate)#BD0048 (lane 1 and lane 2). Lane 5 is 30% input. The western blot was probed using NFKB-p65 pAb.



Western blot (WB) analysis of NFK B-p65 polyclonal antibody at 1:500

Bioworld Technology, Inc.

Add: 1660 South Highway 100, Suite 500 St. Louis Park, MN 55416, USA.

Email: info@bioworld.com

Tel: 6123263284

Fax: 6122933841

Bioworld technology, co. Ltd.

Add: No 9, weidi road Qixia District Nanjing, 210046, P. R. China.

Email: info@biogot.com

Tel: 0086-025-68037686

Fax: 0086-025-68035151



PRODUCT DATA SHEET

Bioworld Technology, Inc.

dilution

For research use only, not for use in diagnostic procedure.

Lane1:C6 whole cell lysate(40ug)

Lane2:BV2 whole cell lysate(40ug)

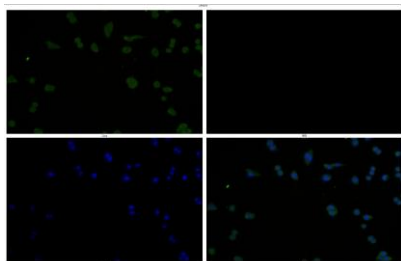
Lane3:A549 whole cell lysate(40ug)

Lane4:Hela whole cell lysate(40ug)

Lane5:HepG2 whole cell lysate(40ug)

Lane6:SHSY5Y whole cell lysate(60ug)

Lane7:EC9706 whole cell lysate(30ug)



Immunofluorescence analysis of MCF-7 cells using NFKB-p65 antibody at dilution of 1:50.

Note:

Bioworld Technology, Inc.

Add: 1660 South Highway 100, Suite 500 St. Louis Park,
MN 55416, USA.

Email: info@bioworld.com

Tel: 6123263284

Fax: 6122933841

Bioworld technology, co. Ltd.

Add: No 9, weidi road Qixia District Nanjing, 210046,
P. R. China.

Email: info@biogot.com

Tel: 0086-025-68037686

Fax: 0086-025-68035151