

Phospho-S6 Ribosomal Protein (RPS6)-S240/244 polyclonal antibody

Catalog: BS79396

Host: Rabbit

Reactivity: Human, Mouse, Rat

BackGround:

Ribosomes, the organelles that catalyze protein synthesis, consist of a small 40S subunit and a large 60S subunit. Together these subunits are composed of 4 RNA species and approximately 80 structurally distinct proteins. This gene encodes a cytoplasmic ribosomal protein that is a component of the 40S subunit. The protein belongs to the S6E family of ribosomal proteins. It is the major substrate of protein kinases in the ribosome, with subsets of five C-terminal serine residues phosphorylated by different protein kinases. Phosphorylation is induced by a wide range of stimuli, including growth factors, tumor-promoting agents, and mitogens. Dephosphorylation occurs at growth arrest. The protein may contribute to the control of cell growth and proliferation through the selective translation of particular classes of mRNA. As is typical for genes encoding ribosomal proteins, there are multiple processed pseudogenes of this gene dispersed through the genome.

Product:

1mg/ml in PBS with 0.02% sodium azide, 50% glycerol, pH7.2

Molecular Weight:

36kDa

Swiss-Prot:

P62753

Purification&Purity:

The antibody was affinity-purified from rabbit antiserum by affinity-chromatography using epitope-specific immunogen and the purity is > 95% (by SDS-PAGE).

Applications:

WB, 1:500 - 1:2000 | IHC, 1:50 - 1:200 | IP, 1:50 - 1:100

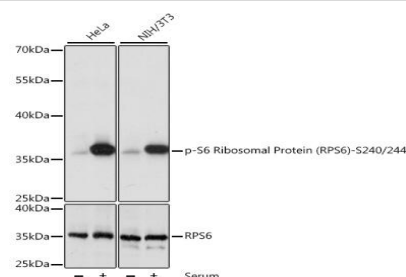
Storage&Stability:

Store at 4 °C short term. Aliquot and store at -20 °C long term. Avoid freeze-thaw cycles.

Modification:

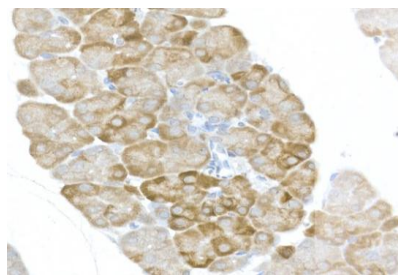
Phosphorylated

DATA:



Western blot analysis of extracts of various cell lines, using Phospho-S6 Ribosomal Protein -S240/244 antibody at 1:1000 dilution or RPS6 antibody. HeLa cells were treated by 10% FBS at 37 °C for 30 minutes after serum-starvation overnight. NIH/3T3 cells were treated by 10% FBS at 37 °C for 30 minutes after serum-starvation overnight.

Secondary antibody: HRP Goat Anti-Rabbit IgG at 1:10000 dilution. Lysates/proteins: 25ug per lane. Blocking buffer: 3% BSA. Detection: ECL Basic Kit. Exposure time: 1s.



Immunohistochemistry of paraffin-embedded mouse pancreas using Phospho-S6 Ribosomal Protein -S240/244 Rabbit pAb at dilution of 1:50. Perform high pressure antigen retrieval with 10 mM citrate buffer pH 6.0 before commencing with IHC staining protocol.

Bioworld Technology, Inc.

Add: 1660 South Highway 100, Suite 500 St. Louis Park, MN 55416, USA.

Email: info@bioworld.com

Tel: 6123263284

Fax: 6122933841

Bioworld technology, co. Ltd.

Add: No 9, weidi road Qixia District Nanjing, 210046, P. R. China.

Email: info@biogot.com

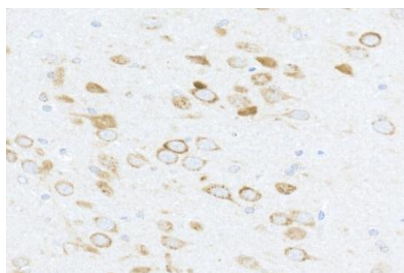
Tel: 0086-025-68037686

Fax: 0086-025-68035151



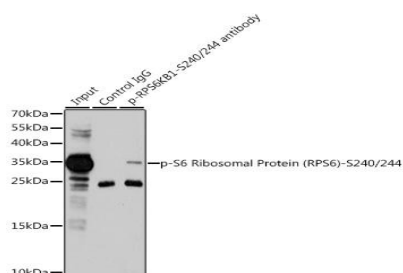
PRODUCT DATA SHEET

Bioworld Technology, Inc.



For research use only, not for use in diagnostic procedure.

Immunohistochemistry of paraffin-embedded rat brain using Phospho-S6 Ribosomal Protein -S240/244 Rabbit pAb at dilution of 1:50. Perform high pressure antigen retrieval with 10 mM citrate buffer pH 6.0 before commencing with IHC staining protocol.



Immunoprecipitation analysis of 200ug extracts of 293T cells, using 3 ug Phospho-S6 Ribosomal Protein -S240/244 pAb. Western blot was performed from the immunoprecipitate using Phospho-RPS6-S240/244 pAb at a dilution of 1:1000. 293T cells were treated by PMA/TPA at 37°C for 30 minutes after serum-starvation overnight.

Note:

Bioworld Technology, Inc.

Add: 1660 South Highway 100, Suite 500 St. Louis Park, MN 55416, USA.

Email: info@bioworld.com

Tel: 6123263284

Fax: 6122933841

Bioworld technology, co. Ltd.

Add: No 9, weidi road Qixia District Nanjing, 210046, P. R. China.

Email: info@biogot.com

Tel: 0086-025-68037686

Fax: 0086-025-68035151