

## SETDB1 polyclonal antibody

Catalog: BS7938

Host: Rabbit

Reactivity: Human, Mouse, Rat

### BackGround:

ERG-associated protein with SET domain (ESET), also designated Histone H3-K9 methyltransferase 4 or SET domain bifurcated 1, is a nuclear protein belonging to the histone-lysine methyltransferase family and to the Suvar3-9 subfamily. It is a highly conserved protein of 150 amino acids that has been implicated in chromatin structure modulation. ESET is excluded from cell nucleoli and areas of condensed chromatin and can associate with the nonpericentromeric regions of chromatin. The gene encoding for this protein, SETDB1, maps to chromosome 1q21. ESET is a histone methyltransferase, methylating Lys-9 of histone H3 and mutations within the SETDB1 gene abolishes its methyltransferase activity. This methylation acts as a tag for epigenetic transcriptional repression by rounding up HP1 proteins to methylated histones. ESET is widely expressed with highest levels found in testis.

### Product:

1mg/ml in PBS with 0.1% Sodium Azide, 50% Glycerol.

### Molecular Weight:

~ 155 kDa

### Swiss-Prot:

Q15047

### Purification&Purity:

The antibody was affinity-purified from rabbit antiserum by affinity-chromatography using epitope-specific immunogen and the purity is > 95% (by SDS-PAGE).

### Applications:

WB: 1:500~1:2000

IHC: 1:50~1:200

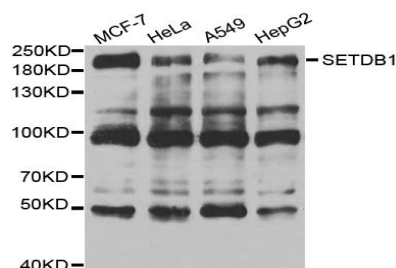
### Storage&Stability:

Store at 4 °C short term. Aliquot and store at -20 °C long term. Avoid freeze-thaw cycles.

### Specificity:

SETDB1 polyclonal antibody detects endogenous levels of SETDB1 protein.

### DATA:



WesternBlot (WB) analysis of SETDB1 polyclonal antibody

### Note:

For research use only, not for use in diagnostic procedure.

### Bioworld Technology, Inc.

Add: 1660 South Highway 100, Suite 500 St. Louis Park, MN 55416, USA.

Email: [info@bioworld.com](mailto:info@bioworld.com)

Tel: 6123263284

Fax: 6122933841

### Bioworld technology, co. Ltd.

Add: No 9, weidi road Qixia District Nanjing, 210046, P. R. China.

Email: [info@biogot.com](mailto:info@biogot.com)

Tel: 0086-025-68037686

Fax: 0086-025-68035151