

## TWF2 polyclonal antibody

Catalog: BS7906

Host: Rabbit

Reactivity: Human, Mouse

### BackGround:

Twinfilin-2, also known as TWF2, A6r, A6RP or PTK9L, is a 349 amino acid protein that localizes to the perinuclear region of the cytoplasm, as well as to the cytoskeleton, and contains two ADF-H domains. Expressed ubiquitously, Twinfilin-2 functions as an Actin-binding protein that is able to both bind and sequester G-Actin and cap the barbed ends of Actin filaments, thereby inhibiting Actin polymerization and playing a role in Actin-related motile and morphological processes. Twinfilin-2 is subject to post-translational phosphorylation by PKC zeta. The gene encoding Twinfilin-2 maps to human chromosome 3, which houses over 1,100 genes, including a chemokine receptor (CKR) gene cluster and a variety of human cancer-related gene loci.

### Product:

1mg/ml in PBS with 0.1% Sodium Azide, 50% Glycerol.

### Molecular Weight:

~ 39 kDa

### Swiss-Prot:

Q6IBS0

### Purification&Purity:

The antibody was affinity-purified from rabbit antiserum by affinity-chromatography using epitope-specific immunogen and the purity is > 95% (by SDS-PAGE).

### Applications:

WB 1:500 - 1:2000

IHC 1:50 - 1:200

IP 1:20 - 1:50

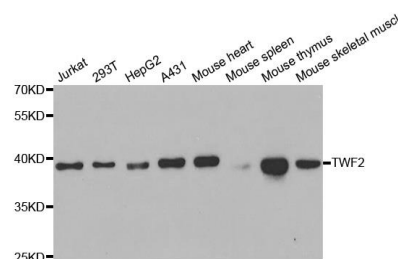
### Storage&Stability:

Store at 4 °C short term. Aliquot and store at -20 °C long term. Avoid freeze-thaw cycles.

### Specificity:

TWF2 polyclonal antibody detects endogenous levels of TWF2 protein.

### DATA:



WesternBlot (WB) analysis of TWF2 polyclonal antibody

### Note:

For research use only, not for use in diagnostic procedure.

### Bioworld Technology, Inc.

Add: 1660 South Highway 100, Suite 500 St. Louis Park, MN 55416, USA.

Email: [info@bioworld.com](mailto:info@bioworld.com)

Tel: 6123263284

Fax: 6122933841

### Bioworld technology, co. Ltd.

Add: No 9, weidi road Qixia District Nanjing, 210046, P. R. China.

Email: [info@biogot.com](mailto:info@biogot.com)

Tel: 0086-025-68037686

Fax: 0086-025-68035151