

CUL4B polyclonal antibody

Catalog: BS7768

Host: Rabbit

Reactivity: Human, Mouse, Rat

BackGround:

Cullin proteins comprise a distinct family of mediators that participate in the selective targeting of proteins for ubiquitin (Ub)-mediated proteolysis. Cul-1, which is the mammalian homolog of Cdc53 from yeast, is an integral component of the E3 ubiquitin ligase complex designated SCF. The SCF (Skp1/Cul-1/F-box protein complex) consists of Skp1 associating with both Cul-1 and an F-box protein, such as Skp2, which determines the substrate specificity of the complex. Cul-1 mediated ubiquitination results in the degradation of cell cycle proteins cyclin D, p21 and cyclin E. Another cullin, CUL-3 facilitates the degradation of cyclin E independent of SCF activity, while CUL-2 associates with the tumor suppressing protein VHL and elongin B to form VBC complexes, which structurally resemble the SCF ligase. Proteolysis also occurs by way of CUL-4 associating with Nedd-8, a ubiquitin-like protein, where it too functions as an active component of a multifunctional E3 complex. CUL-5, or vasopressin-activated, calcium-mobilizing protein (VACM-1), is also included in the cullin family as it shares substantial sequence homology with CUL-1.

Product:

1mg/ml in PBS with 0.1% Sodium Azide, 50% Glycerol.

Molecular Weight:

~ 103 kDa

Swiss-Prot:

Q13620

Purification&Purity:

The antibody was affinity-purified from rabbit antiserum by affinity-chromatography using epitope-specific immunogen and the purity is > 95% (by SDS-PAGE).

Applications:

WB: 1:500~1:2000

IHC/IF: 1:50~1:200

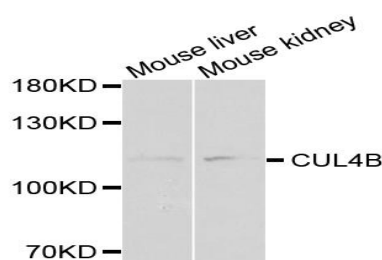
Storage&Stability:

Store at 4 °C short term. Aliquot and store at -20 °C long term. Avoid freeze-thaw cycles.

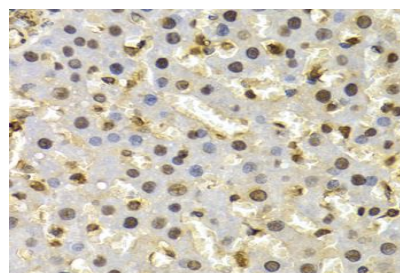
Specificity:

CUL4B polyclonal antibody detects endogenous levels of CUL4B protein.

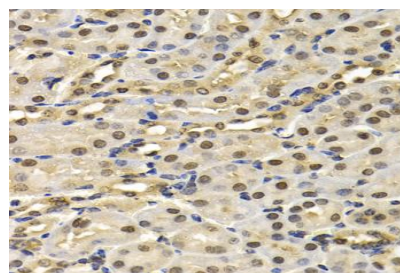
DATA:



Western blot analysis of extracts of mouse tissues, using CUL4B antibody.



Immunohistochemistry of paraffin-embedded rat liver using CUL4B antibody at dilution of 1:200 (400x lens).



Immunohistochemistry of paraffin-embedded mouse kidney using CUL4B antibody at dilution of 1:200 (400x lens).

Note:

For research use only, not for use in diagnostic procedure.

Bioworld Technology, Inc.

Add: 1660 South Highway 100, Suite 500 St. Louis Park, MN 55416, USA.

Email: info@bioworld.com

Tel: 6123263284

Fax: 6122933841

Bioworld technology, co. Ltd.

Add: No 9, weidi road Qixia District Nanjing, 210046, P. R. China.

Email: info@biogot.com

Tel: 0086-025-68037686

Fax: 0086-025-68035151



PRODUCT DATA SHEET

Bioworld Technology, Inc.

Bioworld Technology, Inc.

Add: 1660 South Highway 100, Suite 500 St. Louis Park,
MN 55416, USA.

Email: info@bioworld.com

Tel: 6123263284

Fax: 6122933841

Bioworld technology, co. Ltd.

Add: No 9, weidi road Qixia District Nanjing, 210046,
P. R. China.

Email: info@biogot.com

Tel: 0086-025-68037686

Fax: 0086-025-68035151