

SFRP2 polyclonal antibody

Catalog: BS7759

Host: Rabbit

Reactivity: Human, Mouse, Rat

BackGround:

The frizzled gene, originally identified in *Drosophila melanogaster*, was shown to be involved in the development of tissue polarity. The mammalian homolog of frizzled, as well as several secreted, mammalian, frizzled-related proteins such as FRP-1 (also designated SARP2), FRP-2 (also designated SARP1), FRP-3, FRP-4 and SARP3 (also designated FRP-5), have been identified. The frizzled proteins contain seven transmembrane domains and a cysteine-rich domain in the extra carboxy-terminal Ser/Thr-xxx-Val motif, and they function as receptors for Wnt. The frizzled-1 gene maps to human chromosome 7q21 and is expressed in adult heart, placenta, lung, kidney, pancreas, prostate and ovary, as well as in fetal lung and kidney. Frizzled-2 is expressed in adult heart and fetal brain, lung and kidney. The frizzled-related proteins FRP-1, FRP-2, FRP-3, FRP-4 and SARP3 are secreted proteins that contain regions of homology to the cysteine-rich, ligand-binding domain of frizzled and a conserved, hydrophilic carboxy-terminus. The gene encoding human SARP3 maps to chromosome 4q31.3 and is expressed in retinal pigment epithelium (RPE) and pancreas, while expression of FRP-1, 2 and 4 is high in developing tissues. The FRPs/SARPs are involved in the Wnt signaling pathway by regulating the intracellular levels of β -catenin.

Product:

1mg/ml in PBS with 0.1% Sodium Azide, 50% Glycerol.

Molecular Weight:

~ 33 kDa

Swiss-Prot:

Q96HF1

Purification&Purity:

The antibody was affinity-purified from rabbit antiserum by affinity-chromatography using epitope-specific immunogen and the purity is > 95% (by SDS-PAGE).

Applications:

WB: 1:500~1:2000

IHC/IF: 1:50~1:200

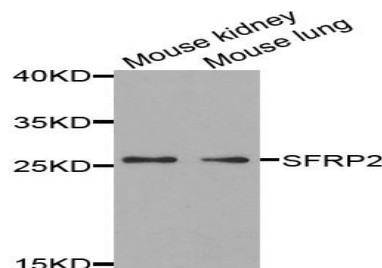
Storage&Stability:

Store at 4 °C short term. Aliquot and store at -20 °C long term. Avoid freeze-thaw cycles.

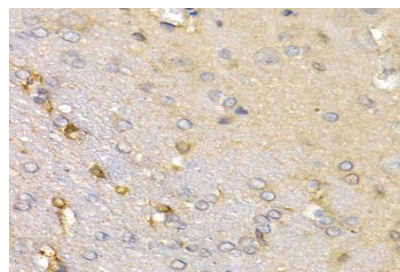
Specificity:

SFRP2 polyclonal antibody detects endogenous levels of SFRP2 protein.

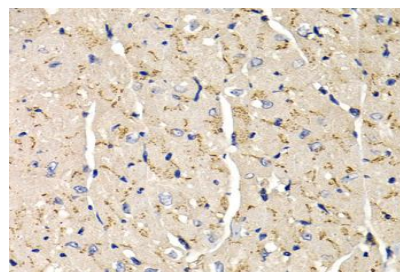
DATA:



Western blot analysis of extracts of various cells, using SFRP2 antibody.



Immunohistochemistry of paraffin-embedded rat brain using SFRP2 antibody at dilution of 1:200 (400x lens).



Immunohistochemistry of paraffin-embedded mouse heart using SFRP2 antibody at dilution of 1:200 (400x lens).

Bioworld Technology, Inc.

Add: 1660 South Highway 100, Suite 500 St. Louis Park, MN 55416, USA.

Email: info@bioworld.com

Tel: 6123263284

Fax: 6122933841

Bioworld technology, co. Ltd.

Add: No 9, weidi road Qixia District Nanjing, 210046, P. R. China.

Email: info@biogot.com

Tel: 0086-025-68037686

Fax: 0086-025-68035151



PRODUCT DATA SHEET

Bioworld Technology, Inc.

Note:

For research use only, not for use in diagnostic procedure.

Bioworld Technology, Inc.

Add: 1660 South Highway 100, Suite 500 St. Louis Park,
MN 55416, USA.

Email: info@bioworld.com

Tel: 6123263284

Fax: 6122933841

Bioworld technology, co. Ltd.

Add: No 9, weidi road Qixia District Nanjing, 210046,
P. R. China.

Email: info@biogot.com

Tel: 0086-025-68037686

Fax: 0086-025-68035151