

BAT3 polyclonal antibody

Catalog: BS7715

Host: Rabbit

Reactivity: Human, Mouse, Rat

BackGround:

BAT3 (HLA-B associated transcript 3), also known as G3, scythe, BAG6 or D6S52E, is a proline-rich nuclear protein with an important role as an apoptotic regulator. BAT3 contains one ubiquitin-like domain at its N-terminus and two nuclear localization signals at its C-terminus. Specifically, BAT3 interacts with and stabilizes AIF (apoptosis inducing factor), thereby sensitizing the cell to apoptosis mediated by endoplasmic reticulum (ER) stress. Upon ricin treatment, BAT3 is cleaved by caspase-3 and its C-terminal fragment displays pro-apoptotic activities. The apoptotic activities executed include nuclear condensation, phosphatidylserine externalization, cell rounding and shrinkage. Mice that are deficient in BAT3 exhibit pronounced defects in lung, brain and kidney development and in the regulation of proliferation and apoptosis. These defects ultimately result in perinatal or midgestational lethality.

Product:

1mg/ml in PBS with 0.1% Sodium Azide, 50% Glycerol.

Molecular Weight:

~ 119 kDa

Swiss-Prot:

P46379

Purification&Purity:

The antibody was affinity-purified from rabbit antiserum by affinity-chromatography using epitope-specific immunogen and the purity is > 95% (by SDS-PAGE).

Applications:

WB 1:500 - 1:2000

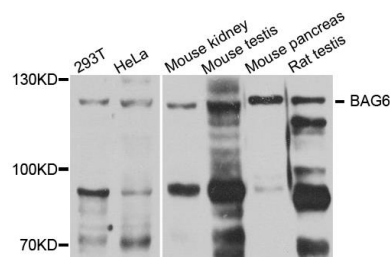
Storage&Stability:

Store at 4 °C short term. Aliquot and store at -20 °C long term. Avoid freeze-thaw cycles.

Specificity:

BAT3 polyclonal antibody detects endogenous levels of BAT3 protein.

DATA:



Western blot analysis of extract of various cells, using BAG6 antibody.

Note:

For research use only, not for use in diagnostic procedure.

Bioworld Technology, Inc.

Add: 1660 South Highway 100, Suite 500 St. Louis Park, MN 55416, USA.

Email: info@bioworld.com

Tel: 6123263284

Fax: 6122933841

Bioworld technology, co. Ltd.

Add: No 9, weidi road Qixia District Nanjing, 210046, P. R. China.

Email: info@biogol.com

Tel: 0086-025-68037686

Fax: 0086-025-68035151