

## CXXC1 polyclonal antibody

Catalog: BS75331

Host: Rabbit

Reactivity: Human, Mouse

### BackGround:

This gene encodes a protein that functions as a transcriptional activator that binds specifically to non-methylated CpG motifs through its CXXC domain. The protein is a component of the SETD1 complex, regulates gene expression and is essential for vertebrate development.

### Product:

1mg/ml in PBS with 0.02% sodium azide, 50% glycerol, pH7.2

### Molecular Weight:

80kDa

### Swiss-Prot:

Q9P0U4

### Purification&Purity:

The antibody was affinity-purified from rabbit antiserum by affinity-chromatography using epitope-specific immunogen and the purity is > 95% (by SDS-PAGE).

### Applications:

WB, 1:500 - 1:2000 | IP, 1:20 - 1:50

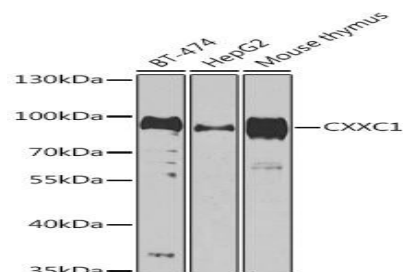
### Storage&Stability:

Store at 4 °C short term. Aliquot and store at -20 °C long term. Avoid freeze-thaw cycles.

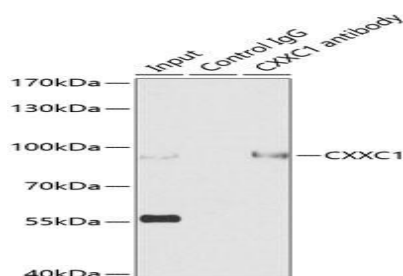
### Modification:

Unmodification

### DATA:



Western blot analysis of extracts of various cell lines, using CXXC1 antibody at 1:1000 dilution. Secondary antibody: HRP Goat Anti-Rabbit IgG at 1:10000 dilution. Lysates/proteins: 25ug per lane. Blocking buffer: 3% nonfat dry milk in TBST. Detection: ECL Enhanced Kit. Exposure time: 90s.



Immunoprecipitation analysis of 200ug extracts of HepG2 cells using 3ug CXXC1 antibody. Western blot was performed from the immunoprecipitate using CXXC1 antibody at a dilution of 1:500.

### Note:

For research use only, not for use in diagnostic procedure.

### Bioworld Technology, Inc.

Add: 1660 South Highway 100, Suite 500 St. Louis Park, MN 55416, USA.

Email: [info@bioworld.com](mailto:info@bioworld.com)

Tel: 6123263284

Fax: 6122933841

### Bioworld technology, co. Ltd.

Add: No 9, weidi road Qixia District Nanjing, 210046, P. R. China.

Email: [info@biogot.com](mailto:info@biogot.com)

Tel: 0086-025-68037686

Fax: 0086-025-68035151