

LRPAP1 polyclonal antibody

Catalog: BS7471

Host: Rabbit

Reactivity: Human, Mouse, Rat

BackGround:

Low density lipoprotein receptor-related protein associated protein 1 also known as LRPAP1 or RAP is a chaperone protein which in humans is encoded by the LRPAP1 gene. LRPAP1 is involved with trafficking of certain members of the LDL receptor family including LRP1 and LRP2. It is a glycoprotein that binds to the alpha-2-macroglobulin receptor, as well as to other members of the low density lipoprotein receptor family. It acts to inhibit the binding of all known ligands for these receptors, and may prevent receptor aggregation and degradation in the endoplasmic reticulum, thereby acting as a molecular chaperone. It may be under the regulatory control of calmodulin, since it is able to bind calmodulin and be phosphorylated by calmodulin-dependent kinase II.

Product:

1mg/ml in PBS with 0.1% Sodium Azide, 50% Glycerol.

Molecular Weight:

~41 kDa

Swiss-Prot:

P30533

Purification&Purity:

The antibody was affinity-purified from rabbit antiserum by affinity-chromatography using epitope-specific immunogen and the purity is > 95% (by SDS-PAGE).

Applications:

WB: 1:500~1:2000

IHC: 1:50~1:200

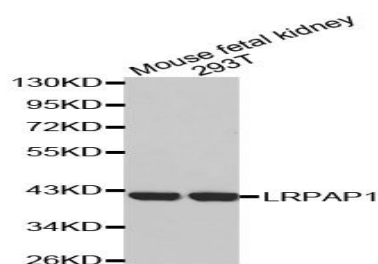
Storage&Stability:

Store at 4 °C short term. Aliquot and store at -20 °C long term. Avoid freeze-thaw cycles.

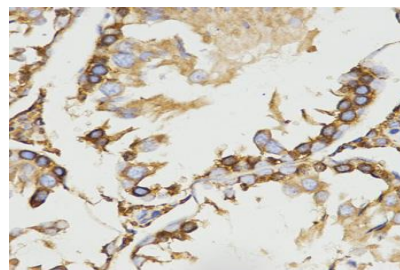
Specificity:

LRPAP1 polyclonal antibody detects endogenous levels of LRPAP1 protein.

DATA:



Western blot (WB) analysis of LRPAP1 polyclonal antibody



Immunohistochemistry (IHC) analysis of LRPAP1 polyclonal antibody in paraffin-embedded Rat Testis tissue.

Note:

For research use only, not for use in diagnostic procedure.

Bioworld Technology, Inc.

Add: 1660 South Highway 100, Suite 500 St. Louis Park, MN 55416, USA.

Email: info@bioworld.com

Tel: 6123263284

Fax: 6122933841

Bioworld technology, co. Ltd.

Add: No 9, weidi road Qixia District Nanjing, 210046, P. R. China.

Email: info@biogot.com

Tel: 0086-025-68037686

Fax: 0086-025-68035151