

## CDH23 polyclonal antibody

Catalog: BS7438

Host: Rabbit

Reactivity: Human, Mouse, Rat

### BackGround:

This gene is a member of the cadherin superfamily, whose genes encode calcium dependent cell-cell adhesion glycoproteins. The encoded protein is thought to be involved in stereocilia organization and hair bundle formation. The gene is located in a region containing the human deafness loci DFNB12 and USH1D. Usher syndrome 1D and nonsyndromic autosomal recessive deafness DFNB12 are caused by allelic mutations of this cadherin-like gene. Alternative splice variants encoding different isoforms have been described.

### Product:

1mg/ml in PBS with 0.1% Sodium Azide, 50% Glycerol.

### Molecular Weight:

~45 kDa

### Swiss-Prot:

Q9H251

### Purification&Purity:

The antibody was affinity-purified from rabbit antiserum by affinity-chromatography using epitope-specific immunogen and the purity is > 95% (by SDS-PAGE).

### Applications:

WB: 1:500~1:2000

IHC: 1:50~1:200

### Storage&Stability:

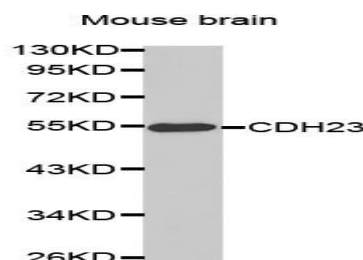
Store at 4 °C short term. Aliquot and store at -20 °C long

term. Avoid freeze-thaw cycles.

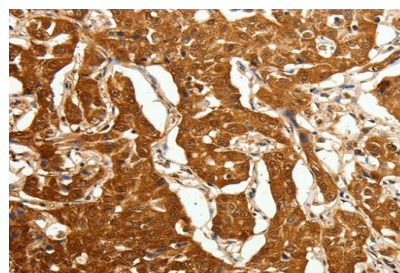
### Specificity:

CDH23 polyclonal antibody detects endogenous levels of CDH23 protein.

### DATA:



Western blot analysis of CDH23 polyclonal antibody



Immunohistochemistry (IHC) analysis of CDH23 polyclonal antibody

### Note:

For research use only, not for use in diagnostic procedure.

### Bioworld Technology, Inc.

Add: 1660 South Highway 100, Suite 500 St. Louis Park, MN 55416, USA.

Email: [info@bioworld.com](mailto:info@bioworld.com)

Tel: 6123263284

Fax: 6122933841

### Bioworld technology, co. Ltd.

Add: No 9, weidi road Qixia District Nanjing, 210046, P. R. China.

Email: [info@biogot.com](mailto:info@biogot.com)

Tel: 0086-025-68037686

Fax: 0086-025-68035151