

## Cathepsin E polyclonal antibody

Catalog: BS72926

Host: Rabbit

Reactivity: Human, Mouse

### BackGround:

This gene encodes a member of the A1 family of peptidases. Alternative splicing of this gene results in multiple transcript variants. At least one of these variants encodes a preproprotein that is proteolytically processed to generate the mature enzyme. This enzyme, an aspartic endopeptidase, may be involved in antigen processing and the maturation of secretory proteins. Elevated expression of this gene has been observed in neurodegeneration.

### Product:

1mg/ml in PBS, 50% glycerol, pH7.3.

### Molecular Weight:

44kDa

### Swiss-Prot:

P14091

### Purification&Purity:

The antibody was affinity-purified from rabbit antiserum by affinity-chromatography using epitope-specific immunogen and the purity is > 95% (by SDS-PAGE).

### Applications:

WB 1:500 - 1:2000

IHC 1:50 - 1:200

IF 1:50 - 1:200

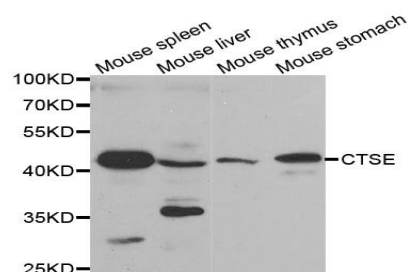
### Storage&Stability:

Store at 4 °C short term. Aliquot and store at -20 °C long term. Avoid freeze-thaw cycles.

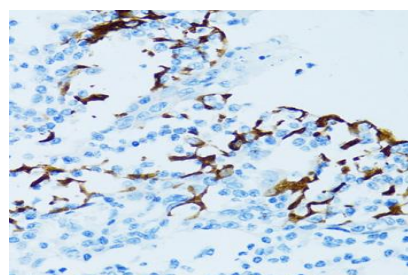
### Specificity:

Cathepsin E polyclonal antibody detects endogenous levels of Cathepsin E protein.

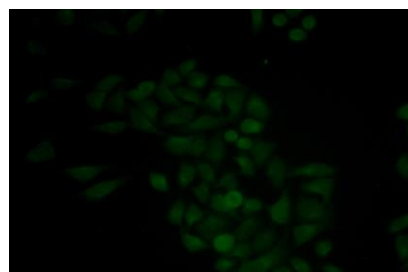
### DATA:



Western blot analysis of extracts of various cell lines, using CTSE antibody.



Immunohistochemistry of paraffin-embedded human tonsil using CTSE antibody.



Immunofluorescence analysis of MCF-7 cells using CTSE antibody.

### Note:

For research use only, not for use in diagnostic procedure.

### Bioworld Technology, Inc.

Add: 1660 South Highway 100, Suite 500 St. Louis Park, MN 55416, USA.

Email: [info@bioworld.com](mailto:info@bioworld.com)

Tel: 6123263284

Fax: 6122933841

### Bioworld technology, co. Ltd.

Add: No 9, weidi road Qixia District Nanjing, 210046, P. R. China.

Email: [info@biogot.com](mailto:info@biogot.com)

Tel: 0086-025-68037686

Fax: 0086-025-68035151