

**PHOSPHO2 polyclonal antibody**

Catalog: BS72244

Host: Rabbit

Reactivity: Human

**BackGround:**

Phosphatase that has high activity toward pyridoxal 5'-phosphate (PLP). Also active at much lower level toward pyrophosphate, phosphoethanolamine (PEA), phosphocholine (PCho), phospho-l-tyrosine, fructose-6-phosphate, p-nitrophenyl phosphate, and h-glycerophosphate.

Catalytic activityi

**Product:**

1mg/ml in PBS with 0.1% Sodium Azide, 50% Glycerol.

**Molecular Weight:**

27kDa

**Swiss-Prot:**

Q8TCD6

**Purification&Purity:**

The antibody was affinity-purified from rabbit antiserum by affinity-chromatography using epitope-specific immunogen and the purity is > 95% (by SDS-PAGE).

**Applications:**

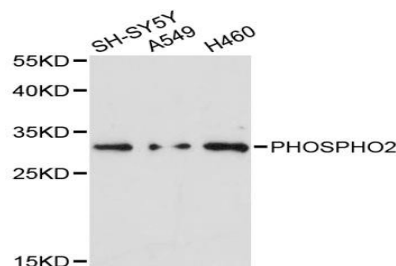
WB 1:500 - 1:1000

**Storage&Stability:**

Store at 4 °C short term. Aliquot and store at -20 °C long term. Avoid freeze-thaw cycles.

**Specificity:**

PHOSPHO2 polyclonal antibody detects endogenous levels of PHOSPHO2 protein.

**DATA:**

Western blot analysis of extracts of various cell lines, using PHOSPHO2 antibody at 1:3000 dilution.

**Note:**

For research use only, not for use in diagnostic procedure.

**Bioworld Technology, Inc.**

Add: 1660 South Highway 100, Suite 500 St. Louis Park, MN 55416, USA.

Email: [info@bioworld.com](mailto:info@bioworld.com)

Tel: 6123263284

Fax: 6122933841

**Bioworld technology, co. Ltd.**

Add: No 9, weidi road Qixia District Nanjing, 210046, P. R. China.

Email: [info@biogol.com](mailto:info@biogol.com)

Tel: 0086-025-68037686

Fax: 0086-025-68035151