

## p68 RNA Helicase polyclonal antibody

Catalog: BS7186

Host: Rabbit

Reactivity: Human, Mouse, Rat

### BackGround:

p68 RNA Helicase is a nuclear protein that exhibits RNA-dependent ATPase activity. Phosphorylation by protein kinase C inhibits p68 RNA Helicase activity. p68 RNA Helicase appears to play a role in organ differentiation during development. Furthermore, p68 RNA Helicase is expressed in early neural development and in various mesodermal tissues in a number of different chordate embryos. At the cellular level, the expression levels of p68 RNA Helicase increase in serum-induced quiescent cell lines.

### Product:

1mg/ml in PBS with 0.1% Sodium Azide, 50% Glycerol.

### Molecular Weight:

~ 68 kDa

### Swiss-Prot:

P17844

### Purification&Purity:

The antibody was affinity-purified from rabbit antiserum by affinity-chromatography using epitope-specific immunogen and the purity is > 95% (by SDS-PAGE).

### Applications:

WB: 1:500~1:2000

IHC/IF: 1:50~1:200

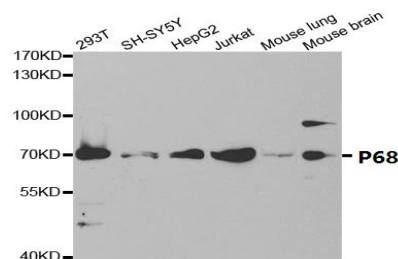
### Storage&Stability:

Store at 4 °C short term. Aliquot and store at -20 °C long term. Avoid freeze-thaw cycles.

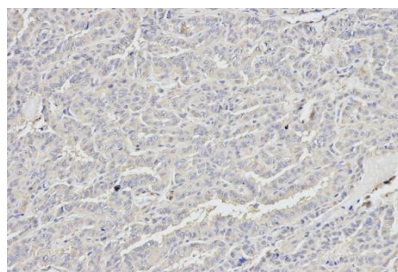
### Specificity:

p68 RNA Helicase polyclonal antibody detects endogenous levels of p68 RNA Helicase protein.

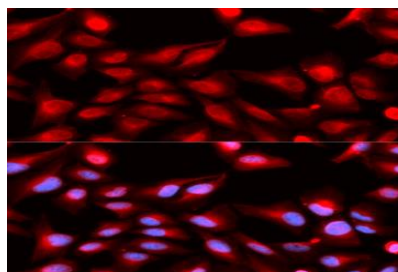
### DATA:



Western blot analysis of p68 RNA Helicase polyclonal antibody



Immunohistochemistry (IHC) analysis of p68 RNA Helicase polyclonal antibody in paraffin-embedded Human Thyroid Cancer tissue.



Immunofluorescence analysis of U2OS cells, using p68 RNA Helicase polyclonal antibody

### Note:

For research use only, not for use in diagnostic procedure.

### Bioworld Technology, Inc.

Add: 1660 South Highway 100, Suite 500 St. Louis Park, MN 55416, USA.

Email: [info@bioworld.com](mailto:info@bioworld.com)

Tel: 6123263284

Fax: 6122933841

### Bioworld technology, co. Ltd.

Add: No 9, weidi road Qixia District Nanjing, 210046, P. R. China.

Email: [info@biogot.com](mailto:info@biogot.com)

Tel: 0086-025-68037686

Fax: 0086-025-68035151