

MYL6B polyclonal antibody

Catalog: BS71404

Host: Rabbit

Reactivity: Human, Mouse, Rat

BackGround:

MYL6B (Myosin light chain 6B) is a heavy chain regulator found in smooth muscle and non-muscle Myosin complexes. Three general classes of Myosin have been cloned: smooth muscle myosins, striated muscle myosins and non-muscle myosins. Contractile activity in smooth muscle is regulated by the calcium/calmodulin-dependent phosphorylation of myosin light chain by myosin light chain kinase. Myosin heavy chains are encoded by the MYH gene family and have Actin-activated ATPase activity which generates the motor function of Myosin. Although it contains three of the EF-hand domains common to Actin and other Myosin regulating proteins, MYL6B does not bind calcium during contraction. It is primarily found in a hexamer consisting of four light chains and two heavy chains.

Product:

1mg/ml in PBS with 0.02% sodium azide, 50% glycerol, pH7.3.

Molecular Weight:

~ 23 kDa

Swiss-Prot:

P14649

Purification&Purity:

The antibody was affinity-purified from rabbit antiserum

by affinity-chromatography using epitope-specific immunogen and the purity is > 95% (by SDS-PAGE).

Applications:

WB 1:200 - 1:500

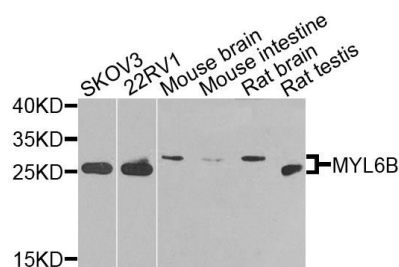
Storage&Stability:

Store at 4 °C short term. Aliquot and store at -20 °C long term. Avoid freeze-thaw cycles.

Specificity:

MYL6B polyclonal antibody detects endogenous levels of MYL6B protein.

DATA:



Western blot analysis of extracts of various cells, using MYL6B antibody.

Note:

For research use only, not for use in diagnostic procedure.

Bioworld Technology, Inc.

Add: 1660 South Highway 100, Suite 500 St. Louis Park, MN 55416, USA.

Email: info@bioworld.com

Tel: 6123263284

Fax: 6122933841

Bioworld technology, co. Ltd.

Add: No 9, weidi road Qixia District Nanjing, 210046, P. R. China.

Email: info@biogol.com

Tel: 0086-025-68037686

Fax: 0086-025-68035151