

KDM7A polyclonal antibody

Catalog: BS71141

Host: Rabbit

Reactivity: Human, Mouse, Rat

BackGround:

Enables histone H3-methyl-lysine-9 demethylase activity and histone H3-tri/di-methyl-lysine-27 demethylase activity. Involved in histone H3-K27 demethylation; histone H3-K9 demethylation; and positive regulation of transcription, DNA-templated. Predicted to be located in nucleolus and nucleoplasm. Human ortholog(s) of this gene implicated in melanoma. Orthologous to human KDM7A (lysine demethylase 7A).

Product:

1mg/ml in PBS with 0.02% sodium azide, 50% glycerol, pH7.2

Molecular Weight:

106kDa

Swiss-Prot:

Q3UWM4

Purification&Purity:

The antibody was affinity-purified from rabbit antiserum by affinity-chromatography using epitope-specific immunogen and the purity is > 95% (by SDS-PAGE).

Applications:

WB, 1:500 - 1:2000

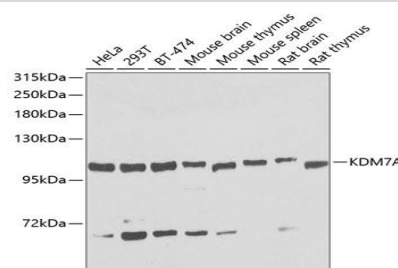
Storage&Stability:

Store at 4 °C short term. Aliquot and store at -20 °C long term. Avoid freeze-thaw cycles.

Category:

Polyclonal Antibodies

DATA:



Western blot analysis of extracts of various cell lines, using KDM7A antibody at 1:1000 dilution. Secondary antibody: HRP Goat Anti-Rabbit IgG at 1:10000 dilution. Lysates/proteins: 25ug per lane. Blocking buffer: 3% nonfat dry milk in TBST. Detection: ECL Basic Kit. Exposure time: 30s.

Note:

For research use only, not for use in diagnostic procedure.

Bioworld Technology, Inc.

Add: 1660 South Highway 100, Suite 500 St. Louis Park, MN 55416, USA.

Email: info@bioworld.com

Tel: 6123263284

Fax: 6122933841

Bioworld technology, co. Ltd.

Add: No 9, weidi road Qixia District Nanjing, 210046, P. R. China.

Email: info@biogot.com

Tel: 0086-025-68037686

Fax: 0086-025-68035151