

CDH6 polyclonal antibody

Catalog: BS71085

Host: Rabbit

Reactivity: Human, Mouse, Rat

BackGround:

This gene encodes a member of the cadherin superfamily. Cadherins are membrane glycoproteins that mediate homophilic cell-cell adhesion and play critical roles in cell differentiation and morphogenesis. The encoded protein is a type II cadherin and may play a role in kidney development as well as endometrium and placenta formation. Decreased expression of this gene may be associated with tumor growth and metastasis.

Product:

Rabbit IgG, 1mg/ml in PBS with 0.02% sodium azide, 50% glycerol, pH7.2

Molecular Weight:

~ 70, 128 kDa

Swiss-Prot:

P55285

Purification&Purity:

The antibody was affinity-purified from rabbit antiserum by affinity-chromatography using epitope-specific immunogen and the purity is > 95% (by SDS-PAGE).

Applications:

WB 1:500 - 1:2000

IHC 1:50 - 1:200

Storage&Stability:

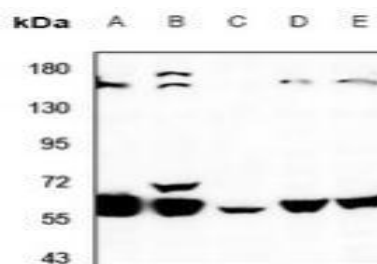
Store at 4°C short term. Aliquot and store at -20°C long

term. Avoid freeze-thaw cycles.

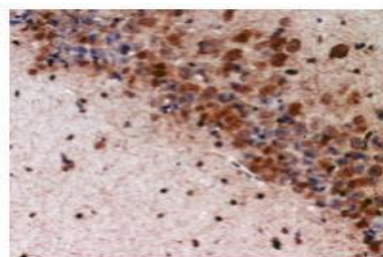
Specificity:

CDH6 polyclonal antibody detects endogenous levels of CDH6 protein.

DATA:



Western blot analysis of CDH6 expression in HEK293T (A), C6 (B), MEF (C), HepG2 (D), H1792 (E) whole cell lysates.



Immunohistochemical analysis of CDH6 staining in mouse brain formalin fixed paraffin embedded tissue section.

Note:

For research use only, not for use in diagnostic procedure.

Bioworld Technology, Inc.

Add: 1660 South Highway 100, Suite 500 St. Louis Park, MN 55416, USA.

Email: info@bioworld.com

Tel: 6123263284

Fax: 6122933841

Bioworld technology, co. Ltd.

Add: No 9, weidi road Qixia District Nanjing, 210046, P. R. China.

Email: info@biogot.com

Tel: 0086-025-68037686

Fax: 0086-025-68035151