

SGK3 polyclonal antibody

Catalog: BS70821

Host: Rabbit

Reactivity: Human, Mouse

BackGround:

This gene is a member of the Ser/Thr protein kinase family and encodes a phosphoprotein with a PX (phox homology) domain. The protein phosphorylates several target proteins and has a role in neutral amino acid transport and activation of potassium and chloride channels. Alternate transcriptional splice variants, encoding different isoforms, have been characterized.

Product:

1mg/ml in PBS with 0.02% sodium azide, 50% glycerol, pH7.3.

Molecular Weight:

~ 57 kDa

Swiss-Prot:

Q96BR1

Purification&Purity:

The antibody was affinity-purified from rabbit antiserum by affinity-chromatography using epitope-specific immunogen and the purity is > 95% (by SDS-PAGE).

Applications:

WB 1:500 - 1:2000

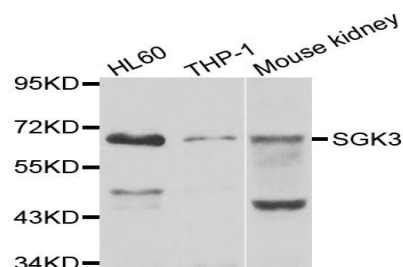
Storage&Stability:

Store at 4 °C short term. Aliquot and store at -20 °C long term. Avoid freeze-thaw cycles.

Specificity:

SGK3 polyclonal antibody detects endogenous levels of SGK3 protein.

DATA:



Western blot analysis of extracts of various cell lines, using SGK3 antibody.

Note:

For research use only, not for use in diagnostic procedure.

Bioworld Technology, Inc.

Add: 1660 South Highway 100, Suite 500 St. Louis Park, MN 55416, USA.

Email: info@bioworld.com

Tel: 6123263284

Fax: 6122933841

Bioworld technology, co. Ltd.

Add: No 9, weidi road Qixia District Nanjing, 210046, P. R. China.

Email: info@biogol.com

Tel: 0086-025-68037686

Fax: 0086-025-68035151