

**LMOD1 polyclonal antibody**

Catalog: BS70764

Host: Rabbit

Reactivity: Human

**BackGround:**

The leiomodlin 1 protein has a putative membrane-spanning region and 2 types of tandemly repeated blocks. The transcript is expressed in all tissues tested, with the highest levels in thyroid, eye muscle, skeletal muscle, and ovary. Increased expression of leiomodlin 1 may be linked to Graves' disease and thyroid-associated ophthalmopathy.

**Product:**

1mg/ml in PBS with 0.02% sodium azide, 50% glycerol, pH7.3.

**Molecular Weight:**

~ 67 kDa

**Swiss-Prot:**

P29536

**Purification&Purity:**

The antibody was affinity-purified from rabbit antiserum by affinity-chromatography using epitope-specific immunogen and the purity is > 95% (by SDS-PAGE).

**Applications:**

WB 1:500 - 1:2000

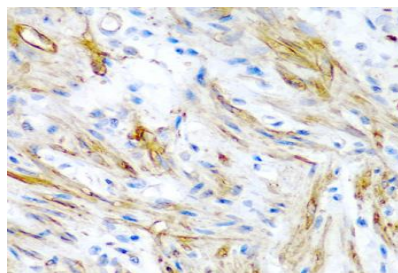
IHC 1:50 - 1:200

**Storage&Stability:**

Store at 4 °C short term. Aliquot and store at -20 °C long term. Avoid freeze-thaw cycles.

**Specificity:**

LMOD1 polyclonal antibody detects endogenous levels of LMOD1 protein.

**DATA:**

Immunohistochemistry of paraffin-embedded human colon using LMOD1 antibody at dilution of 1:200 (40x lens).

**Note:**

For research use only, not for use in diagnostic procedure.

**Bioworld Technology, Inc.**

Add: 1660 South Highway 100, Suite 500 St. Louis Park, MN 55416, USA.

Email: [info@bioworld.com](mailto:info@bioworld.com)

Tel: 6123263284

Fax: 6122933841

**Bioworld technology, co. Ltd.**

Add: No 9, weidi road Qixia District Nanjing, 210046, P. R. China.

Email: [info@biogot.com](mailto:info@biogot.com)

Tel: 0086-025-68037686

Fax: 0086-025-68035151