

Activated-Caspase-9 p35 (D315) polyclonal antibody

Catalog: BS7070

Host: Rabbit

Reactivity: Human, Mouse, Rat

BackGround:

Caspase-9 (ICE-LAP6, Mch6) is an important member of the cysteine aspartic acid protease (caspase) family. Upon apoptotic stimulation, cytochrome c released from mitochondria associates with the 47 kDa procaspase-9/Apaf 1. Apaf-1 mediated activation of caspase-9 involves intrinsic proteolytic processing resulting in cleavage at Asp315 and producing a p35 subunit.

Product:

1 mg/ml in Phosphate buffered saline (PBS) with 0.05% sodium azide, approx. pH 7.2.

Molecular Weight:

~ 35 kDa

Swiss-Prot:

P55211

Purification&Purity:

The antibody was affinity-purified from rabbit antiserum by affinity-chromatography using epitope-specific immunogen and the purity is > 95% (by SDS-PAGE).

Applications:

WB: 1:500~1:1000

IHC: 1:50~1:200

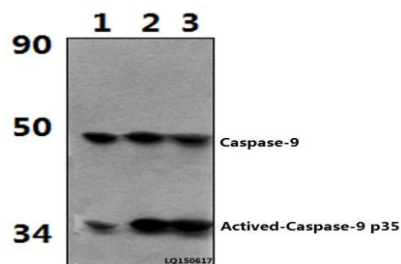
Storage&Stability:

Store at 4 °C short term. Aliquot and store at -20 °C long term. Avoid freeze-thaw cycles.

Specificity:

Activated-Caspase-9 p35 (D315) polyclonal antibody detects endogenous levels of the 35 kDa large fragment of caspase-9 following cleavage at aspartic acid 315.

DATA:

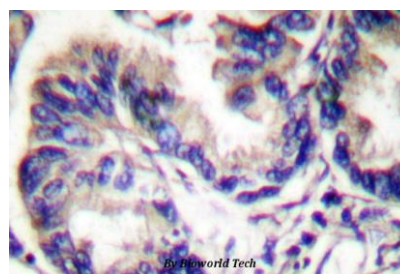


Western blot (WB) analysis of Activated-Caspase-9 p35 (D315) polyclonal antibody at 1:1000 dilution

Lane1:Hela whole cell lysate(40ug)

Lane2:Hela treated with H2O2 (100nmol/ml, 25min, Na3O4V) whole cell lysate (40ug)

Lane3:Hela treated with H2O2 (100nmol/ml, 25min, λ-ppase) whole cell lysate (40ug)



Immunohistochemistry (IHC) analyzes of Activated-Caspase-9 p35 (D315) pAb in paraffin-embedded human lung carcinoma.

Note:

For research use only, not for use in diagnostic procedure.

Bioworld Technology, Inc.

Add: 1660 South Highway 100, Suite 500 St. Louis Park, MN 55416, USA.

Email: info@bioworld.com

Tel: 6123263284

Fax: 6122933841

Bioworld technology, co. Ltd.

Add: No 9, weidi road Qixia District Nanjing, 210046, P. R. China.

Email: info@biogot.com

Tel: 0086-025-68037686

Fax: 0086-025-68035151