

SMO polyclonal antibody

Catalog: BS70534

Host: Rabbit

Reactivity: Human, Mouse, Rat

BackGround:

The protein encoded by this gene is a G protein-coupled receptor that interacts with the patched protein, a receptor for hedgehog proteins. The encoded protein transduces signals to other proteins after activation by a hedgehog protein/patched protein complex.

Product:

1mg/ml in PBS with 0.02% sodium azide, 50% glycerol, pH7.2

Molecular Weight:

~ 95 kDa

Swiss-Prot:

Q99835

Purification&Purity:

The antibody was affinity-purified from rabbit antiserum by affinity-chromatography using epitope-specific immunogen and the purity is > 95% (by SDS-PAGE).

Applications:

WB, 1:500 - 1:1000 | IHC, 1:100 - 1:200

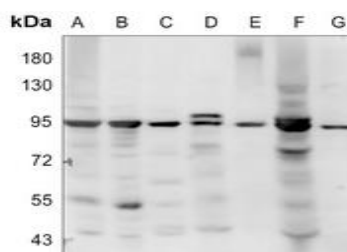
Storage&Stability:

Store at 4 °C short term. Aliquot and store at -20 °C long term. Avoid freeze-thaw cycles.

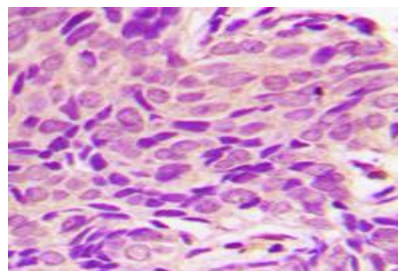
Specificity:

SMO pAb detects endogenous levels of SMO protein.

DATA:



Western blot analysis of SMO expression in HEK293T (A), HepG2 (B), H1688 (C), mouse liver (D), mouse muscle (E), rat liver (F), rat muscle (G) whole cell lysates.



Immunohistochemical analysis of SMO staining in human breast cancer formalin fixed paraffin embedded tissue section.

Note:

For research use only, not for use in diagnostic procedure.

Bioworld Technology, Inc.

Add: 1660 South Highway 100, Suite 500 St. Louis Park,

MN 55416, USA.

Email: info@bioworld.com

Tel: 6123263284

Fax: 6122933841

Bioworld technology, co. Ltd.

Add: No 9, weidi road Qixia District Nanjing, 210046, P. R. China.

Email: info@biogot.com

Tel: 0086-025-68037686

Fax: 0086-025-68035151