

## Cleaved-Notch 1 (V1754) polyclonal antibody

Catalog: BS7018

Host: Rabbit

Reactivity: Human, Mouse, Rat

### BackGround:

Notch1 is a transmembrane protein functioning in development and the determination of cell fate. During maturation, the notch molecule is cleaved by a furin-like convertase at its extracellular domain. Upon binding to a ligand such as Delta1, or upon extracellular calcium depletion, the carboxy-terminal notch1 fragment is released and further cleaved between Gly1753 and Val1754. The resulting activated cytosolic fragment translocates to the nucleus where it activates transcription.

### Product:

1 mg/ml in Phosphate buffered saline (PBS) with 0.05% sodium azide, approx. pH 7.2.

### Molecular Weight:

~ 110 kDa

### Swiss-Prot:

P46531

### Purification&Purity:

The antibody was affinity-purified from rabbit antiserum by affinity-chromatography using epitope-specific immunogen and the purity is > 95% (by SDS-PAGE).

### Applications:

IHC: 1:50~1:200

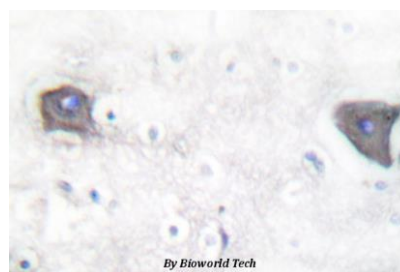
### Storage&Stability:

Store at 4 °C short term. Aliquot and store at -20 °C long term. Avoid freeze-thaw cycles.

### Specificity:

Cleaved-Notch 1 (V1754) polyclonal antibody detects endogenous levels of the Notch1 intracellular domain (NICD). The antibody does not recognize full-length Notch1.

### DATA:



Immunohistochemistry (IHC) analyzes of Cleaved-Notch 1 (V1754) pAb in paraffin-embedded human brain tissue.

### Note:

For research use only, not for use in diagnostic procedure.

### Bioworld Technology, Inc.

Add: 1660 South Highway 100, Suite 500 St. Louis Park, MN 55416, USA.

Email: [info@bioworld.com](mailto:info@bioworld.com)

Tel: 6123263284

Fax: 6122933841

### Bioworld technology, co. Ltd.

Add: No 9, weidi road Qixia District Nanjing, 210046, P. R. China.

Email: [info@biogot.com](mailto:info@biogot.com)

Tel: 0086-025-68037686

Fax: 0086-025-68035151