

## Cleaved-Lamin A (D230+) polyclonal antibody

Catalog: BS7014

Host: Rabbit

Reactivity: Human, Mouse, Rat

### BackGround:

Lamins are nuclear membrane structural components that are important in maintaining normal cell functions such as cell cycle control, DNA replication, and chromatin organization. Lamin A/C is cleaved by caspase-6 and serves as a marker for caspase-6 activation. During apoptosis, lamin A/C is specifically cleaved into a large (41-50 kDa) and a small (28 kDa) fragment. The cleavage of lamins results in nuclear disregulation and cell death.

### Product:

1mg/ml in PBS with 0.1% Sodium Azide, 50% Glycerol.

### Molecular Weight:

~ 45, 50 kDa

### Swiss-Prot:

P02545

### Purification&Purity:

The antibody was affinity-purified from rabbit antiserum by affinity-chromatography using epitope-specific immunogen and the purity is > 95% (by SDS-PAGE).

### Applications:

WB: 1:500~1:1000

IHC: 1:50~1:200

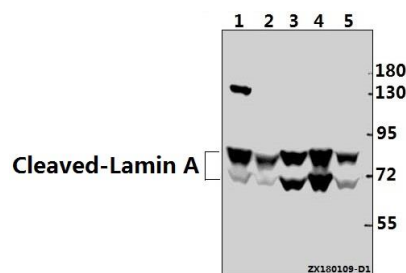
### Storage&Stability:

Store at 4 °C short term. Aliquot and store at -20 °C long term. Avoid freeze-thaw cycles.

### Specificity:

Cleaved-Lamin A (D230+) polyclonal antibody detects the large fragment of lamin A (50 kDa) and lamin C (45 kDa) resulting from cleavage at Asp230. The antibody does not cross-react with full length lamin A or lamin C.

### DATA:



Western blot (WB) analysis of Cleaved-Lamin A (D230+) pAb at 1:500 dilution

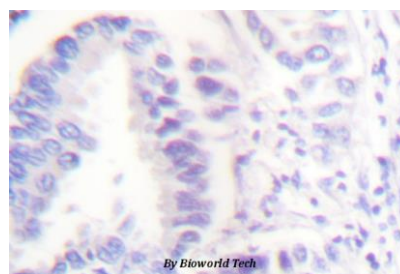
Lane1: C6 whole cell lysate (40ug)

Lane2: AML-12 whole cell lysate (40ug)

Lane3: Panc1 whole cell lysate (30ug)

Lane4: L02 whole cell lysate (30ug)

Lane5: H1792 whole cell lysate (40ug)



Immunohistochemistry (IHC) analysis of Cleaved-Lamin A (D230+) pAb in paraffin-embedded human lung carcinoma tissue.

### Note:

For research use only, not for use in diagnostic procedure.

### Bioworld Technology, Inc.

Add: 1660 South Highway 100, Suite 500 St. Louis Park, MN 55416, USA.

Email: [info@bioworld.com](mailto:info@bioworld.com)

Tel: 6123263284

Fax: 6122933841

### Bioworld technology, co. Ltd.

Add: No 9, weidi road Qixia District Nanjing, 210046, P. R. China.

Email: [info@biogot.com](mailto:info@biogot.com)

Tel: 0086-025-68037686

Fax: 0086-025-68035151