



## CPSF3L polyclonal antibody

Catalog: BS6946

Host: Rabbit

Reactivity: Human, Mouse, Rat

### BackGround:

RNA polymerase II (Pol II) is an enzyme that is composed of twelve subunits and is responsible for the transcription of protein-coding genes. Transcription initiation requires Pol II-mediated recruitment of transcription machinery to a target promoter, thereby allowing transcription to begin. The integrator complex is a multi-protein complex that associates with the C-terminal domain of Pol II and is involved in small nuclear RNA (snRNA) transcription and 3'-end processing. This interaction is facilitated by phosphorylation of serine-7 on Pol II. CPSF3L (Cleavage and polyadenylation-specific factor 3-like protein), also known as Integrator complex subunit 11 (INTS11), is a 600 amino acid protein that is a component of the integrator complex and is expressed as three isoforms.

### Product:

1mg/ml in PBS with 0.1% Sodium Azide, 50% Glycerol.

### Molecular Weight:

~ 68 kDa

### Swiss-Prot:

Q5TA45

### Purification&Purity:

The antibody was affinity-purified from rabbit antiserum by affinity-chromatography using epitope-specific im-

munogen and the purity is > 95% (by SDS-PAGE).

### Applications:

WB: 1:500~1:2000

IHC: 1:50~1:200

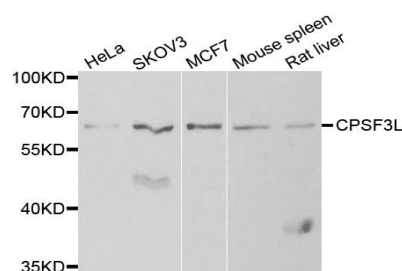
### Storage&Stability:

Store at 4 °C short term. Aliquot and store at -20 °C long term. Avoid freeze-thaw cycles.

### Specificity:

CPSF3L polyclonal antibody detects endogenous levels of CPSF3L protein.

### DATA:



WesternBlot (WB) analysis of CPSF3L polyclonal antibody

### Note:

For research use only, not for use in diagnostic procedure.

### Bioworld Technology, Inc.

Add: 1660 South Highway 100, Suite 500 St. Louis Park, MN 55416, USA.

Email: [info@bioworld.com](mailto:info@bioworld.com)

Tel: 6123263284

Fax: 6122933841

### Bioworld technology, co. Ltd.

Add: No 9, weidi road Qixia District Nanjing, 210046, P. R. China.

Email: [info@biogot.com](mailto:info@biogot.com)

Tel: 0086-025-68037686

Fax: 0086-025-68035151