

## RAPGEF3 polyclonal antibody

Catalog: BS6936

Host: Rabbit

Reactivity: Human, Mouse

### BackGround:

3',5' cyclic adenosine monophosphate (cAMP)-regulated guanine nucleotide exchange factors Epac (Epac1, cAMP-GEFI) and Epac2 (cAMP-GEFII) activate the Ras family GTPases Rap 1 and Rap 2 by promoting GTP binding in a cAMP-dependent manner. Eukaryotic cAMP is a second messenger that induces physiological responses such as gene expression, growth, differentiation, secretion and neurotransmission. The human Epac gene maps to chromosome 12q13.11 with transcript being abundant in the kidney and heart. In situ hybridization indicates expression of Epac in adult rat brain and selective expression in neonatal brain, including septum and thalamus.

### Product:

1 mg/ml in Phosphate buffered saline (PBS) with 0.05% sodium azide, approx. pH 7.2.

### Molecular Weight:

~ 99 kDa

### Swiss-Prot:

O95398

### Purification&Purity:

The antibody was affinity-purified from rabbit antiserum by affinity-chromatography using epitope-specific immunogen and the purity is > 95% (by SDS-PAGE).

### Applications:

WB 1:500 - 1:2000

IF 1:50 - 1:200

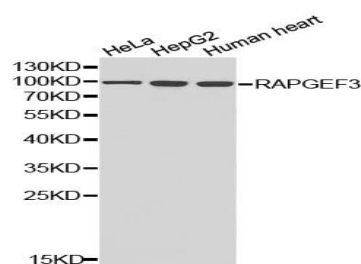
### Storage&Stability:

Store at 4 °C short term. Aliquot and store at -20 °C long term. Avoid freeze-thaw cycles.

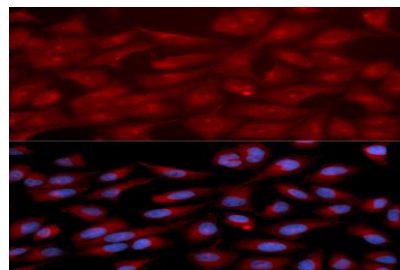
### Specificity:

RAPGEF3 polyclonal antibody detects endogenous levels of RAPGEF3 protein.

### DATA:



Western blot (WB) analysis of RAPGEF3 polyclonal antibody



Immunofluorescence analysis of U2OS cells, using RAPGEF3 polyclonal antibody

### Note:

For research use only, not for use in diagnostic procedure.

### Bioworld Technology, Inc.

Add: 1660 South Highway 100, Suite 500 St. Louis Park, MN 55416, USA.

Email: [info@bioworld.com](mailto:info@bioworld.com)

Tel: 6123263284

Fax: 6122933841

### Bioworld technology, co. Ltd.

Add: No 9, weidi road Qixia District Nanjing, 210046, P. R. China.

Email: [info@biogot.com](mailto:info@biogot.com)

Tel: 0086-025-68037686

Fax: 0086-025-68035151