

CD31/PECAM-1 polyclonal antibody

Catalog: BS6897

Host: Rabbit

Reactivity: Human, Mouse

BackGround:

CD31 (Platelet Endothelial Cell Adhesion Molecule-1: PECAM-1), a member of the Ig superfamily of cell adhesion molecules, is expressed by circulating platelets, monocytes, neutrophils, some T cells and endothelial cells, and modulates cell adhesion, endothelial cell migration and angiogenesis. CD31 is phosphorylated on Tyr686 at the cytoplasmic carboxy-terminal tail upon various stimuli (e.g. mechanical stress or oxidative stress), presumably by Src family members. The tyrosine phosphorylation mediates associations with a number of SH2 domain containing binding partners such as PI3-kinase, SHIP, PLC γ and SHP-2. Thus, CD31 serves as a scaffold for various signaling molecules.

Product:

1 mg/ml in Phosphate buffered saline (PBS) with 0.05% sodium azide, approx. pH 7.2.

Molecular Weight:

~ 130 kDa

Swiss-Prot:

P16284

Purification&Purity:

The antibody was affinity-purified from rabbit antiserum by affinity-chromatography using epitope-specific immunogen and the purity is > 95% (by SDS-PAGE).

Applications:

WB: 1:500~1:2000

IHC: 1:50~1:200

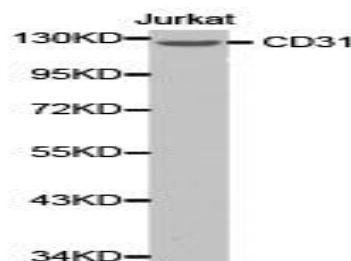
Storage&Stability:

Store at 4 °C short term. Aliquot and store at -20 °C long term. Avoid freeze-thaw cycles.

Specificity:

CD31/PECAM-1 polyclonal antibody detects endogenous levels of CD31 protein.

DATA:



Western blot analysis of extracts of Jurkat cell line, using CD31 antibody.

Note:

For research use only, not for use in diagnostic procedure.

Bioworld Technology, Inc.

Add: 1660 South Highway 100, Suite 500 St. Louis Park, MN 55416, USA.

Email: info@bioworld.com

Tel: 6123263284

Fax: 6122933841

Bioworld technology, co. Ltd.

Add: No 9, weidi road Qixia District Nanjing, 210046, P. R. China.

Email: info@biogot.com

Tel: 0086-025-68037686

Fax: 0086-025-68035151