

## Cathepsin K polyclonal antibody

Catalog: BS67500

Host: Rabbit

Reactivity: Human, Mouse, Rat

### BackGround:

Thiol protease involved in osteoclastic bone resorption and may participate partially in the disorder of bone remodeling. Displays potent endoprotease activity against fibrinogen at acid pH. May play an important role in extracellular matrix degradation. Involved in the release of thyroid hormone thyroxine (T4) by limited proteolysis of TG/thyroglobulin in the thyroid follicle lumen.

### Product:

Liquid in 0.42% Potassium phosphate, 0.87% Sodium chloride, pH 7.3, 30% glycerol, and 0.01% sodium azide.

### Molecular Weight:

~ 25 kDa

### Swiss-Prot:

P43235

### Purification&Purity:

The antibody was purified by immunogen affinity chromatography.

### Applications:

WB (1/500 - 1/1000)

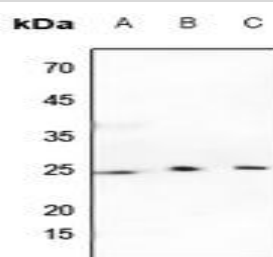
### Storage&Stability:

Store at 4 °C short term. Aliquot and store at -20 °C long term. Avoid freeze-thaw cycles.

### Specificity:

Recognizes endogenous levels of Cathepsin K protein.

### DATA:



Western blot analysis of Cathepsin K expression in U2OS (A), mouse testis (B), rat testis (C) whole cell lysates.

### Note:

For research use only, not for use in diagnostic procedure.

### Bioworld Technology, Inc.

Add: 1660 South Highway 100, Suite 500 St. Louis Park, MN 55416, USA.

Email: [info@bioworld.com](mailto:info@bioworld.com)

Tel: 6123263284

Fax: 6122933841

### Bioworld technology, co. Ltd.

Add: No 9, weidi road Qixia District Nanjing, 210046, P. R. China.

Email: [info@biogol.com](mailto:info@biogol.com)

Tel: 0086-025-68037686

Fax: 0086-025-68035151