

GPR62 polyclonal antibody

Catalog: BS67493

Host: Rabbit

Reactivity: Human, Mouse, Rat

BackGround:

Orphan G-protein coupled receptor. Constitutively activates the G(q/11)/inositol phosphate and the G(s)-alpha/cAMP signaling pathways. Has spontaneous activity for beta-arrestin recruitment. Shows a reciprocal modulation of signaling functions with the melatonin receptor MTNR1B most likely through receptor heteromerization.

Product:

Liquid in 0.42% Potassium phosphate, 0.87% Sodium chloride, pH 7.3, 30% glycerol, and 0.01% sodium azide.

Molecular Weight:

~ 48 kDa

Swiss-Prot:

Q9BZJ7

Purification&Purity:

The antibody was purified by immunogen affinity chromatography.

Applications:

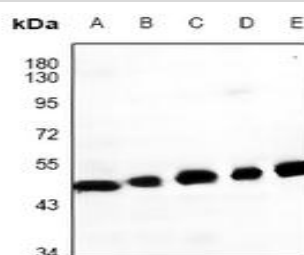
WB (1/500 - 1/1000)

Storage&Stability:

Store at 4 °C short term. Aliquot and store at -20 °C long term. Avoid freeze-thaw cycles.

Specificity:

Recognizes endogenous levels of GPR62 protein.

DATA:

Western blot analysis of GPR62 expression in mouse brain (A), rat brain (B), HeLa (C), SGC7901 (D), PC3 (E) whole cell lysates.

Note:

For research use only, not for use in diagnostic procedure.

Bioworld Technology, Inc.

Add: 1660 South Highway 100, Suite 500 St. Louis Park, MN 55416, USA.

Email: info@bioworld.com

Tel: 6123263284

Fax: 6122933841

Bioworld technology, co. Ltd.

Add: No 9, weidi road Qixia District Nanjing, 210046, P. R. China.

Email: info@biogol.com

Tel: 0086-025-68037686

Fax: 0086-025-68035151