

SDC2 polyclonal antibody

Catalog: BS6729

Host: Rabbit

Reactivity: Human, Mouse, Rat

BackGround:

Syndecans are type I integral membrane proteoglycans that contain both chondroitin sulfate and heparan sulfate groups. Syndecans are involved in cell-extracellular matrix adhesion and growth factor binding. Syndecan-1 (SYND1, also called CD138) is an extracellular matrix receptor which binds to collagens, Fibronectin and Thrombospondin. Syndecan-1 and Syndecan-3 (also designated N-Syndecan) interact with MK (midkine), a growth/differentiation factor involved in embryogenesis of the central nervous system. Syndecan-2 (also designated fibroglycan or HSPG) is highly expressed at areas of high morphogenetic activity, such as epithelial-mesenchymal interfaces and the prechondrogenic and preosteogenic mesenchymal condensations. Syndecan-4 (also designated amphiglycan or ryudocan) functions cooperatively with integrins in the processes of cell spreading, focal adhesion assembly and Actin stress fiber assembly.

Product:

1mg/ml in PBS with 0.1% Sodium Azide, 50% Glycerol.

Molecular Weight:

~ 22 kDa

Swiss-Prot:

P34741

Purification&Purity:

The antibody was affinity-purified from rabbit antiserum by affinity-chromatography using epitope-specific immunogen and the purity is > 95% (by SDS-PAGE).

Applications:

WB: 1:500~1:2000

IHC: 1:50~1:200

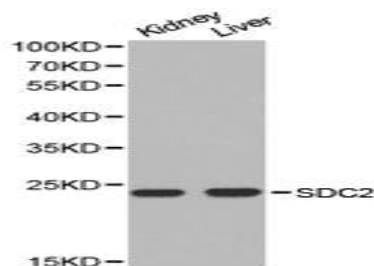
Storage&Stability:

Store at 4 °C short term. Aliquot and store at -20 °C long term. Avoid freeze-thaw cycles.

Specificity:

SDC2 polyclonal antibody detects endogenous levels of SDC2 protein.

DATA:



Western blot analysis of extracts of various cell lines, using SDC2 antibody.

Note:

For research use only, not for use in diagnostic procedure.

Bioworld Technology, Inc.

Add: 1660 South Highway 100, Suite 500 St. Louis Park, MN 55416, USA.

Email: info@bioworld.com

Tel: 6123263284

Fax: 6122933841

Bioworld technology, co. Ltd.

Add: No 9, weidi road Qixia District Nanjing, 210046, P. R. China.

Email: info@biogot.com

Tel: 0086-025-68037686

Fax: 0086-025-68035151