

Factor B Polyclonal Antibody

Catalog: BS65969

Host: Rabbit

Reactivity: Human, Mouse, Rat

BackGround:

The complement component proteins, C3, C4 and C5, are potent anaphylatoxins that are released during complement activation. Binding of these proteins to their respective G protein-coupled receptors, C3aR, C1R and C5aR, induces proinflammatory events, such as cellular degranulation, smooth muscle contraction, arachidonic acid metabolism, cytokine release, leukocyte activation and cellular chemotaxis. Complement Factor B, also designated Properdin Factor B or PBF2, is part of the alternate pathway of the complement system and is cleaved by Factor D into two fragments: Ba and Bb. Bb combines with complement Factor 3b to produce the C3 or C5 convertase and plays a role in the differentiation and proliferation of preactivated B lymphocytes, lysis of erythrocytes, stimulation of lymphocyte blastogenesis and rapid spreading of peripheral blood monocytes. Ba is important in inhibiting the proliferation of preactivated B lymphocytes. Adipsin, also designated complement Factor D, is a serine protease that cleaves complement Factor B and may be involved in obesity. Factor H controls the function of the alternative complement pathway. FHR-1 (complement Factor H related protein 1) may play a role in lipid metabolism

Product:

Rabbit IgG, 1mg/ml in PBS with 0.02% sodium azide, 50% glycerol, pH7.2

Molecular Weight:

~ 100 kDa

Swiss-Prot:

P00751

Purification&Purity:

The antibody was affinity-purified from rabbit antiserum by affinity-chromatography using epitope-specific immunogen and the purity is > 95% (by SDS-PAGE).

Applications:

WB 1:500 - 1:1000

IHC-P 1:50 - 1:200

IF/ICC 1:50 - 1:200

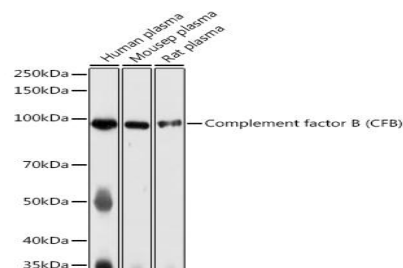
Storage&Stability:

Store at 4 °C short term. Aliquot and store at -20 °C long term. Avoid freeze-thaw cycles.

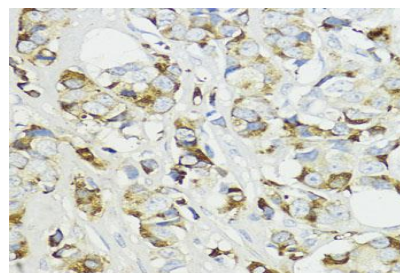
Specificity:

Factor B Polyclonal Antibody detects endogenous levels of Factor B protein.

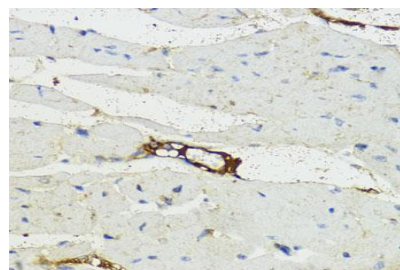
DATA:



Western blot analysis of extracts of various cell lines, using Complement factor B (CFB) antibody at 1:1000 dilution.



Immunohistochemistry analysis of paraffin-embedded human mammary cancer using Complement factor B (CFB) antibody at dilution of 1:200 (40x lens).



Bioworld Technology, Inc.

Add: 1660 South Highway 100, Suite 500 St. Louis Park, MN 55416, USA.

Email: info@bioworld.com

Tel: 6123263284

Fax: 6122933841

Bioworld technology, co. Ltd.

Add: No 9, weidi road Qixia District Nanjing, 210046, P. R. China.

Email: info@biogot.com

Tel: 0086-025-68037686

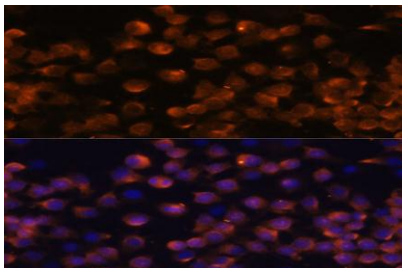
Fax: 0086-025-68035151



PRODUCT DATA SHEET

Bioworld Biotech Co., Ltd

Immunohistochemistry analysis of paraffin-embedded mouse heart using Complement factor B (CFB) antibody at dilution of 1:200 (40x lens).



Immunofluorescence analysis of Raw264.7 cells using Complement factor B (CFB) Polyclonal Antibody at dilution of 1:100 (40x lens).

Note:

For research use only, not for use in diagnostic procedure.

Bioworld Technology, Inc.

Add: 1660 South Highway 100, Suite 500 St. Louis Park, MN 55416, USA.

Email: info@bioworld.com

Tel: 6123263284

Fax: 6122933841

Bioworld technology, co. Ltd.

Add: No 9, weidi road Qixia District Nanjing, 210046, P. R. China.

Email: info@biogot.com

Tel: 0086-025-68037686

Fax: 0086-025-68035151