

## Piwil2 Polyclonal Antibody

Catalog: BS65870

Host: Rabbit

Reactivity: Human, Mouse, Rat

### BackGround:

HILI is a 973 amino acid protein encoded by the human gene PIWIL2. HILI belongs to the argonaute family and contains one PAZ domain and one PIWI domain. HILI is a cytoplasmic protein that is expressed in adult testis and in most tumors. It regulates spermatogenesis and primordial germ cell production and has an essential role in meiotic differentiation of spermatocytes and in self-renewal of spermatogonial stem cells. Expression of HILI can modulate expression of genes involved in stem cell proliferation (such as PDGFR- $\beta$ ), in energy metabolism (such as Glut1), in cell-cell interaction (such as Integrin  $\alpha 6$ , GJA7, THY-1 and CD9), and in germ cell differentiation (such as STRA8). It may also play a role as a regulatory factor of Stat3/Bcl-xS/L/CCND1 pathway. Repression of HILI can inhibit tumor cell growth. HILI acts as an oncogene by inhibition of apoptosis and promotion of proliferation in tumors.

### Product:

0.01M TBS(pH7.4) with 1% BSA, 0.03% Proclin300 and 50% Glycerol.

### Molecular Weight:

~110kDa

### Swiss-Prot:

Q8TC59

### Purification&Purity:

affinity purified by Protein A

### Applications:

WB=1:500-2000

ELISA=1:5000-10000

IHC=1:100-500

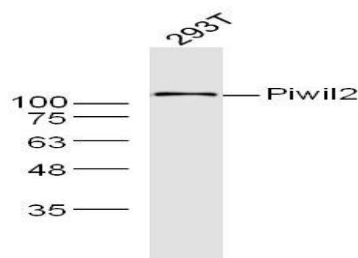
### Storage&Stability:

Store at 4 °C short term. Aliquot and store at -43 °C long term. Avoid freeze-thaw cycles.

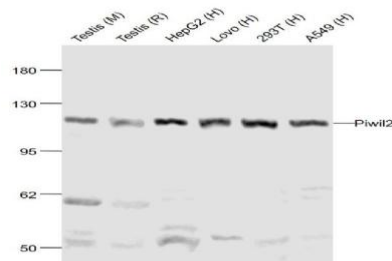
### Specificity:

Piwil2 Polyclonal Antibody detects endogenous levels of Piwil2 protein.

### DATA:



Primary: Anti- Piwil2 at 1/300 dilution



Primary: Anti-Piwil2 at 1/1000 dilution

### Note:

For research use only, not for use in diagnostic procedure.

### Bioworld Technology, Inc.

Add: 1660 South Highway 100, Suite 500 St. Louis Park, MN 55416, USA.

Email: [info@bioworld.com](mailto:info@bioworld.com)

Tel: 6123263284

Fax: 6122933841

### Bioworld technology, co. Ltd.

Add: No 9, weidi road Qixia District Nanjing, 210046, P. R. China.

Email: [info@biogot.com](mailto:info@biogot.com)

Tel: 0086-025-68037686

Fax: 0086-025-68035151