

ZFR Polyclonal Antibody

Catalog: BS65831	Host: Rabbit	Reactivity: Hu-man, Mouse, Rat, Dog, Pig, Cow, Horse, Rabbit, Sheep,
------------------	--------------	--

BackGround:

ZFR is 1,074 amino acid RNA-binding protein. In human, ZFR is expressed in lung, liver, lymphocytes, heart, pancreas, kidney and placenta, and regulates postimplantation and gastrulation stages of development. Murine ZFR is observed in testis, ovary and brain. With elevated levels of expression during meiosis, ZFR associates with chromosome foci in meiotic cells. ZFR contains 1 DZF domain and localizes in the somatodendritic compartment of hippocampal neurons and colocalizes with STAU2 in cytosolic RNA granules. Knockout of ZFR in mouse embryo prevents the development of some embryonic structures leads to an increase in programmed cell death with a decrease in mitotic index.

Product:

0.01M TBS(pH7.4) with 1% BSA, 0.03% Proclin300 and 50% Glycerol.

Molecular Weight:

~117kDa

Swiss-Prot:

Q96KR1

Purification&Purity:

affinity purified by Protein A

Applications:

WB=1:500-2000

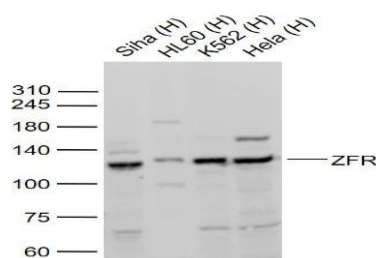
Storage&Stability:

Store at 4 °C short term. Aliquot and store at -4 °C long term. Avoid freeze-thaw cycles.

Specificity:

ZFR Polyclonal Antibody detects endogenous levels of ZFR protein.

DATA:



Primary: Anti-ZFR at 1/1000 dilution

Note:

For research use only, not for use in diagnostic procedure.

Bioworld Technology, Inc.

Add: 1660 South Highway 100, Suite 500 St. Louis Park, MN 55416, USA.

Email: info@bioworld.com

Tel: 6123263284

Fax: 6122933841

Bioworld technology, co. Ltd.

Add: No 9, weidi road Qixia District Nanjing, 210046, P. R. China.

Email: info@biogot.com

Tel: 0086-025-68037686

Fax: 0086-025-68035151