

ZCCHC7 Polyclonal Antibody

Catalog: BS65820

Host: Rabbit

Reactivity: Human,

BackGround:

ZCCHC7 (Zinc Finger CCHC-Type Containing 7) is a Protein Coding gene. Among its related pathways are Deadenylation-dependent mRNA decay. GO annotations related to this gene include nucleic acid binding and poly(A) RNA binding.

Product:

0.01M TBS(pH7.4) with 1% BSA, 0.03% Proclin300 and 50% Glycerol.

Molecular Weight:

~60 kDa

Swiss-Prot:

Q8N3Z6

Purification&Purity:

affinity purified by Protein A

Applications:

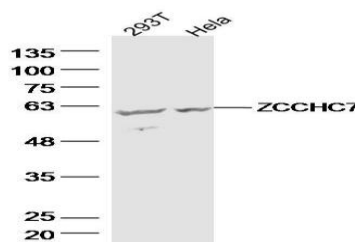
WB=1:500-2000

Storage&Stability:

Store at 4 °C short term. Aliquot and store at -7 °C long term. Avoid freeze-thaw cycles.

Specificity:

ZCCHC7 Polyclonal Antibody detects endogenous levels of ZCCHC7 protein.

DATA:

Primary: Anti-ZCCHC7 at 1/300 dilution

Note:

For research use only, not for use in diagnostic procedure.

Bioworld Technology, Inc.

Add: 1660 South Highway 100, Suite 500 St. Louis Park,
MN 55416, USA.

Email: info@bioworld.com

Tel: 6123263284

Fax: 6122933841

Bioworld technology, co. Ltd.

Add: No 9, weidi road Qixia District Nanjing, 210046,
P. R. China.

Email: info@biogol.com

Tel: 0086-025-68037686

Fax: 0086-025-68035151