

CFHL1 Polyclonal Antibody

Catalog: BS65481

Host: Rabbit

Reactivity: Human, Mouse, Rat, Rabbit,

BackGround:

Might be involved in complement regulation. Can associate with lipoproteins and may play a role in lipid metabolism. The factor H gene family is a multidomain, multi-functional protein family whose individual members are defined by conserved structural elements, which display diverse yet often overlapping functions.

Product:

0.01M TBS(pH7.4) with 1% BSA, 0.03% Proclin300 and 50% Glycerol.

Molecular Weight:

36 kD

Swiss-Prot:

Q03591

Purification&Purity:

affinity purified by Protein A

Applications:

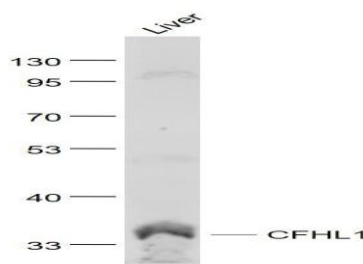
WB=1:500-2000

Storage&Stability:

Store at 4 °C short term. Aliquot and store at -20 °C long term. Avoid freeze-thaw cycles.

Specificity:

CFHL1 Polyclonal Antibody detects endogenous levels of CFHL1 protein.

DATA:

Primary: Anti- CFHL1 at 1/1000 dilution

Note:

For research use only, not for use in diagnostic procedure.

Bioworld Technology, Inc.

Add: 1660 South Highway 100, Suite 500 St. Louis Park, MN 55416, USA.

Email: info@bioworld.com

Tel: 6123263284

Fax: 6122933841

Bioworld technology, co. Ltd.

Add: No 9, weidi road Qixia District Nanjing, 210046, P. R. China.

Email: info@biogol.com

Tel: 0086-025-68037686

Fax: 0086-025-68035151