

CISH polyclonal antibody

Catalog: BS65401

Host: Rabbit

Reactivity: Rat, Mouse

Background:

The suppressor of cytokine signaling (SOCS) family members are negative regulators of cytokine signal transduction that inhibit the Jak/Stat pathway. The SOCS family consists of at least 8 members including the originally identified cytokine-inducible SH2-containing protein (CIS1), as well as SOCS1-7. Each SOCS family member contains a central SH2 domain and a conserved carboxy-terminal motif designated as the SOCS box. These proteins are important regulators of cytokine signaling, proliferation, differentiation, and immune responses. CISH/CIS1, the first described member of the SOCS family, is induced by a number of cytokines including IL-2, IL-3, GM-CSF, and EPO. The CISH protein appears as a doublet around 32 and 37 kDa, the nature of which is unknown. CISH binds to phosphorylated cytokine receptors and can inhibit Stat5 activity. Expression of CISH is regulated by Stat5, thereby providing feedback modulation. Transgenic mice overexpressing CISH display phenotypes similar to Stat5 knockouts, including defects in mammary gland development and in T and NK cell regulation. Research studies have shown that polymorphisms within the CISH gene are associated with susceptibility to infectious diseases.

Product:

Rabbit IgG, 1mg/ml in PBS with 0.02% sodium azide, 50% glycerol, pH7.2

Molecular Weight:

~ 32 kDa

Swiss-Prot:

Q9NSE2

Purification&Purity:

The antibody was affinity-purified from rabbit antiserum by affinity-chromatography using epitope-specific immunogen and the purity is > 95% (by SDS-PAGE).

Applications:

WB: 1:500~1:1000

IHC: 1:50~1:200

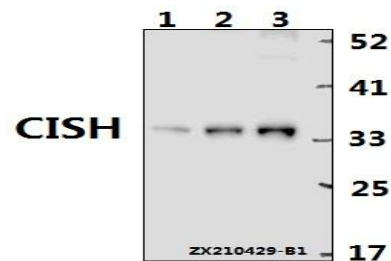
Storage&Stability:

Store at 4 °C short term. Aliquot and store at -20 °C long term. Avoid freeze-thaw cycles.

Specificity:

CISH polyclonal antibody detects endogenous levels of CISH protein.

DATA:

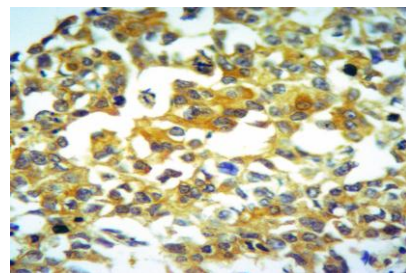


Western blot (WB) analysis of CISH polyclonal antibody at 1:500 dilution

Lane1: The Liver tissue lysate of Mouse(40ug)

Lane2: The Kidney tissue lysate of Rat(40ug)

Lane3: The Liver tissue lysate of Rat(40ug)



Immunohistochemistry of paraffin-embedded Human Liver cancer using CISH antibody at dilution of 1:50.

Note:

For research use only, not for use in diagnostic procedure.

Bioworld Technology, Inc.

Add: 1660 South Highway 100, Suite 500 St. Louis Park, MN 55416, USA.

Email: info@bioworld.com

Tel: 6123263284

Fax: 6122933841

Bioworld technology, co. Ltd.

Add: No 9, weidi road Qixia District Nanjing, 210046, P. R. China.

Email: info@biogot.com

Tel: 0086-025-68037686

Fax: 0086-025-68035151



PRODUCT DATA SHEET

Bioworld Technology, Inc.

Bioworld Technology, Inc.

Add: 1660 South Highway 100, Suite 500 St. Louis Park,
MN 55416, USA.

Email: info@bioworld.com

Tel: 6123263284

Fax: 6122933841

Bioworld technology, co. Ltd.

Add: No 9, weidi road Qixia District Nanjing, 210046,
P. R. China.

Email: info@biogot.com

Tel: 0086-025-68037686

Fax: 0086-025-68035151