

## BLMH polyclonal antibody

Catalog: BS6469

Host: Rabbit

Reactivity: Human, Rat

### BackGround:

BLM hydrolase (Bleomycin hydrolase, BLM hydrolase, BMH) is a 455 amino acid protein encoded by the human gene BLMH. BLM hydrolase belongs to the cysteine protease papain superfamily and the peptidase C1 family. It is a cytoplasmic cysteine peptidase commonly found as a homohexamer. It is highly conserved through evolution, however, the only known activity of the enzyme is metabolic inactivation of the glycopeptide bleomycin (BLM). BLM is an essential component of combination chemotherapy regimens for cancer.

### Product:

1mg/ml in PBS with 0.1% Sodium Azide, 50% Glycerol.

### Molecular Weight:

~ 53 kDa

### Swiss-Prot:

Q13867

### Purification&Purity:

The antibody was affinity-purified from rabbit antiserum by affinity-chromatography using epitope-specific immunogen and the purity is > 95% (by SDS-PAGE).

### Applications:

WB: 1:500~1:2000

IHC/IF: 1:50~1:200

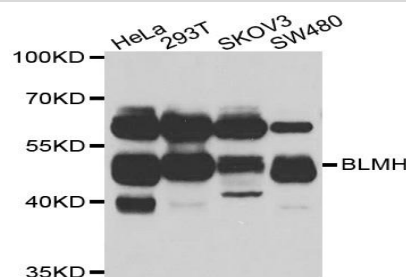
### Storage&Stability:

Store at 4 °C short term. Aliquot and store at -20 °C long term. Avoid freeze-thaw cycles.

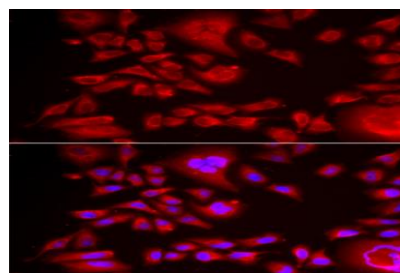
### Specificity:

BLMH polyclonal antibody detects endogenous levels of BLMH protein.

### DATA:



Western blot analysis of extracts of various cell lines, using BLMH antibody.



Immunofluorescence analysis of HeLa cell using BLMH antibody. Blue: DAPI for nuclear staining.

### Note:

For research use only, not for use in diagnostic procedure.

### Bioworld Technology, Inc.

Add: 1660 South Highway 100, Suite 500 St. Louis Park, MN 55416, USA.

Email: [info@bioworld.com](mailto:info@bioworld.com)

Tel: 6123263284

Fax: 6122933841

### Bioworld technology, co. Ltd.

Add: No 9, weidi road Qixia District Nanjing, 210046, P. R. China.

Email: [info@biogot.com](mailto:info@biogot.com)

Tel: 0086-025-68037686

Fax: 0086-025-68035151