

eNOS (Phospho-S615) polyclonal antibody

Catalog: BS64540

Host: Rabbit

Reactivity: Human,Mouse,Rat

BackGround:

NOS is classified under three types: neuronal NOS (nNOS) or brain NOS (bNOS); inducible NOS (iNOS) or macrophage NOS (mNOS); and endothelial NOS (eNOS). eNOS is a calcium/calmodulin dependent enzyme which undergoes several post translational modifications, including acylation with myristate and palmitate, and phosphorylation on numerous residues. As with the other members of the NOS family, eNOS derives the diffusible multifunctional second messenger NO from L arginine through a series of reactions in which L citrulline is an intermediate. eNOS plays an important role in controlling vascular tone, platelet aggregation, and cardiac myocyte function.

Product:

Rabbit IgG, 1mg/ml in PBS with 0.02% sodium azide, 50% glycerol, pH7.2

Molecular Weight:

~ 140 kDa

Swiss-Prot:

P29474

Purification&Purity:

The antibody was affinity-purified from rabbit antiserum by affinity-chromatography using epitope-specific immunogen and the purity is > 95% (by SDS-PAGE).

Applications:

WB:1:500~1:1000

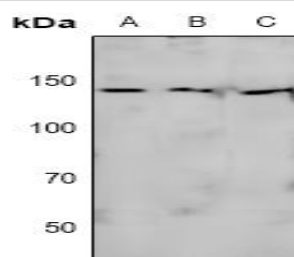
Storage&Stability:

Store at 4 °C short term. Aliquot and store at -20 °C long term. Avoid freeze-thaw cycles.

Specificity:

eNOS (Phospho-S615) polyclonal antibody detects endogenous levels of eNOS protein only when phosphorylated at Ser615.

DATA:



Western blot (WB) analysis of eNOS (Phospho-S615) polyclonal antibody at 1:500 dilution

LaneA:K562 whole cell lysate

LaneB:The Spleen tissue lysate of Mouse

LaneC:The Spleen tissue lysate of Rat

Note:

For research use only, not for use in diagnostic procedure.

Bioworld Technology, Inc.

Add: 1660 South Highway 100, Suite 500 St. Louis Park, MN 55416, USA.

Email: info@bioworld.com

Tel: 6123263284

Fax: 6122933841

Bioworld technology, co. Ltd.

Add: No 9, weidi road Qixia District Nanjing, 210046, P. R. China.

Email: info@biogot.com

Tel: 0086-025-68037686

Fax: 0086-025-68035151