

## PKM2 polyclonal antibody

Catalog: BS6443

Host: Rabbit

Reactivity: Human, Mouse, Rat

### BackGround:

The PKM2 (pyruvate kinase, muscle) gene encodes the M1- and M2-type isoenzymes through alternative splicing events. Both M1- and M2-type isoforms exist as tetramers and are stimulated by fructose 1,6-bisphosphate. In addition, both isoforms exhibit thyroid hormone binding activity and may be referred to as CTHBP (cytosolic thyroid hormone-binding protein) or THBP1.

### Product:

1mg/ml in PBS with 0.1% Sodium Azide, 50% Glycerol.

### Molecular Weight:

~ 58 kDa

### Swiss-Prot:

P14618

### Purification&Purity:

The antibody was affinity-purified from rabbit antiserum by affinity-chromatography using epitope-specific immunogen and the purity is > 95% (by SDS-PAGE).

### Applications:

WB: 1:500~1:2000 IHC/IF: 1:50~1:200

IP/RIP: 1:50~1:200

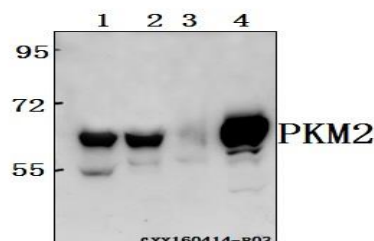
### Storage&Stability:

Store at 4 °C short term. Aliquot and store at -20 °C long term. Avoid freeze-thaw cycles.

### Specificity:

PKM2 polyclonal antibody detects endogenous levels of PKM2 protein.

### DATA:



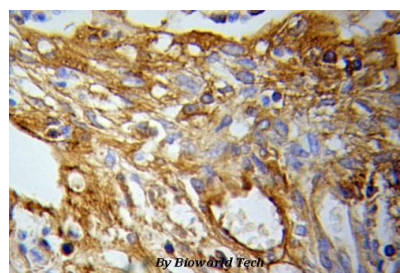
Western blot (WB) analysis of PKM2 polyclonal antibody at 1:500 dilution

Lane1:C6 whole cell lysate(40ug)

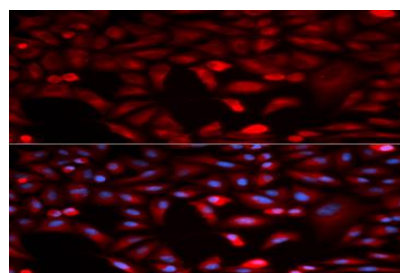
Lane2:HEK293T whole cell lysate(40ug)

Lane3:The stomach tissue lysate of Mouse(40ug)

Lane4:MCF-7 whole cell lysate(20ug)



Immunohistochemistry (IHC) analysis of PKM2 pAb in paraffin-embedded Lung cancer tissue.



Immunofluorescence analysis of HeLa cells, using PKM2 polyclonal antibody

### Note:

For research use only, not for use in diagnostic procedure.

### Bioworld Technology, Inc.

Add: 1660 South Highway 100, Suite 500 St. Louis Park, MN 55416, USA.

Email: [info@bioworld.com](mailto:info@bioworld.com)

Tel: 6123263284

Fax: 6122933841

### Bioworld technology, co. Ltd.

Add: No 9, weidi road Qixia District Nanjing, 210046, P. R. China.

Email: [info@biogot.com](mailto:info@biogot.com)

Tel: 0086-025-68037686

Fax: 0086-025-68035151