

BAMBI polyclonal antibody

Catalog: BS6435

Host: Rabbit

Reactivity: Human, Rat

BackGround:

BAMBI (BMP and activin membrane-bound inhibitor homolog, NMA), also designated Non-metastatic gene A protein, is a membrane spanning glycoprotein that acts as a negative regulator of TGF- β signaling during development. The BAMBI family of proteins are related to type I TGF- β receptor family, however, BAMBI is a pseudoreceptor that lacks an intracellular serine/threonine kinase domain. BAMBI transcription regulation is under the influence of β -catenin, BMP, smad3 and smad4. BAMBI expression can increase in colorectal and hepatocellular carcinomas relative to non-cancerous tissues. BAMBI is expressed at high levels during odontogenesis. BAMBI is coexpressed with Bmp-4 during early *Xenopus* embryogenesis and can be detected in poorly metastatic human melanoma cell lines.

Product:

1mg/ml in PBS with 0.1% Sodium Azide, 50% Glycerol.

Molecular Weight:

~ 29 kDa

Swiss-Prot:

Q13145

Purification&Purity:

The antibody was affinity-purified from rabbit antiserum by affinity-chromatography using epitope-specific immunogen and the purity is > 95% (by SDS-PAGE).

Applications:

WB: 1:500~1:2000

IF: 1:50~1:200

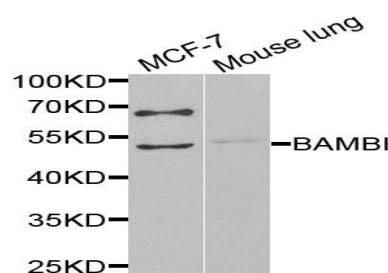
Storage&Stability:

Store at 4 °C short term. Aliquot and store at -20 °C long term. Avoid freeze-thaw cycles.

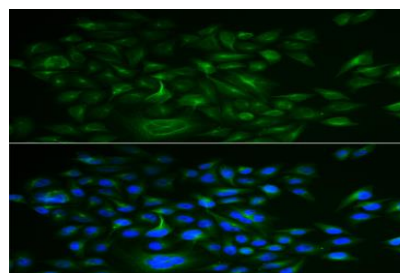
Specificity:

BAMBI polyclonal antibody detects endogenous levels of BAMBI protein.

DATA:



Western blot analysis of extracts of various cells, using BAMBI antibody.



Immunofluorescence analysis of HeLa cells using BAMBI antibody.

Blue: DAPI for nuclear staining.

Note:

For research use only, not for use in diagnostic procedure.

Bioworld Technology, Inc.

Add: 1660 South Highway 100, Suite 500 St. Louis Park, MN 55416, USA.

Email: info@bioworld.com

Tel: 6123263284

Fax: 6122933841

Bioworld technology, co. Ltd.

Add: No 9, weidi road Qixia District Nanjing, 210046, P. R. China.

Email: info@biogot.com

Tel: 0086-025-68037686

Fax: 0086-025-68035151