

MEF2A (Acetyl-K403) polyclonal antibody

Catalog: BS64105

Host: Rabbit

Reactivity: Human, Mouse, Rat

BackGround:

MEF2A is a member of the MEF2 (myocyte enhancer factor 2) family of transcription factors. In mammals, four MEF2A-related genes (MEF2A, MEF2B, MEF2C and MEF2D) encode proteins which exhibit significant amino acid sequence similarity within their DNA binding domains and to a lesser extent throughout the remaining proteins. The MEF2 family members were originally described as muscle-specific DNA binding proteins that recognize MEF2 motifs found within the promoters of many muscle-specific genes. Phosphorylation of MEF2A at Thr312 and Thr319 within the transcription activation domain by p38 MAP kinase enhances MEF2A-MEF2D heterodimer-dependent gene expression. On the other hand, apoptotic stimuli (e.g. neurotoxic insult) result in CDK5-dependent phosphorylation of MEF2A at Ser408 within the activation domain, inhibiting MEF2A pro-survival function.

Product:

1 mg/ml in Phosphate buffered saline (PBS) with 0.05% sodium azide, approx. pH 7.3.

Molecular Weight:

~ 54 kDa

Swiss-Prot:

Q02078

Purification&Purity:

The antibody was affinity-purified from rabbit antiserum by affinity-chromatography using epitope-specific immunogen and the purity is > 96% (by SDS-PAGE).

Applications:

WB: 1:500~1:1000

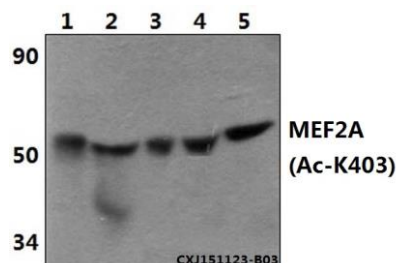
Storage&Stability:

Store at 4 °C short term. Aliquot and store at -20 °C long term. Avoid freeze-thaw cycles.

Specificity:

MEF2A (Acetyl- -K403) polyclonal antibody detects endogenous levels of MEF-2 protein only when acetylated at Lys403.

DATA:



Western blot (WB) analysis of MEF2A (Acetyl-K403) polyclonal antibody at 1:500 dilution

Lane1: The muscle tissue lysate of Mouse(30ug)

Lane2: The muscle tissue lysate of Rat(30ug)

Lane3: The brain tissue lysate of Mouse(30ug)

Lane4: The brain tissue lysate of Rat(30ug)

Lane5: HEK293T whole cell lysate(40ug)

Note:

For research use only, not for use in diagnostic procedure.

Bioworld Technology, Inc.

Add: 1660 South Highway 100, Suite 500 St. Louis Park, MN 55416, USA.

Email: info@bioworld.com

Tel: 6123263284

Fax: 6122933841

Bioworld technology, co. Ltd.

Add: No 9, weidi road Qixia District Nanjing, 210046, P. R. China.

Email: info@biogol.com

Tel: 0086-025-68037686

Fax: 0086-025-68035151