

LYN (phospho-Y192) polyclonal antibody

Catalog: BS64043

Host: Rabbit

Reactivity: Human, Mouse, Rat

BackGround:

Src is the human homolog of the v-src gene of the Rous sarcoma virus, also known as avian sarcoma virus or ASV. Src is the first proto-oncogenic non-receptor tyrosine kinase characterized in human. By virtue of common structural motifs, the Src family is composed of nine members in vertebrates, including Src, Yes, Fgr, Frk, Fyn, Lyn, Hck, Lck and Blk. Src-family kinases transduce signals that are involved in the control of a variety of cellular processes, including proliferation, differentiation, motility, and adhesion. Src-family kinases contain an amino terminal cell membrane anchor followed by an SH3 domain and an SH2 domain involved in modular association and activation, respectively. Src-family kinases are normally maintained in an inactive state and can be activated transiently during cellular events such as mitosis. The human Lyn gene maps to chromosome 8q12 and encodes a 505 amino acid protein. Hematopoietic tissues predominantly express Lyn, which influences normal immunoglobulin production and regulation.

Product:

1 mg/ml in Phosphate buffered saline (PBS) with 0.05% sodium azide, approx. pH 7.3.

Molecular Weight:

~ 50, 58 kDa

Swiss-Prot:

P07948

Purification&Purity:

The antibody was affinity-purified from rabbit antiserum by affinity-chromatography using epitope-specific im-

munogen and the purity is > 95% (by SDS-PAGE).

Applications:

WB: 1:500~1:1000

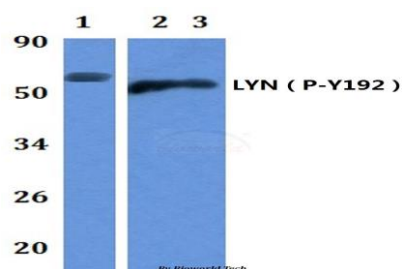
Storage&Stability:

Store at 4 °C short term. Aliquot and store at -20 °C long term. Avoid freeze-thaw cycles.

Specificity:

LYN (phospho-Y192) polyclonal antibody detects endogenous levels of LYN protein only when phosphorylated at Tyr192.

DATA:



Western blot (WB) analysis of p-LYN (Y192) polyclonal antibody at 1:500 dilution

Lane1:MCF-7 whole cell lysate

Lane2:The Brain tissue lysate of Mouse

Lane3:The Brain tissue lysate of Rat

Note:

For research use only, not for use in diagnostic procedure.

Bioworld Technology, Inc.

Add: 1660 South Highway 100, Suite 500 St. Louis Park, MN 55416, USA.

Email: info@bioworld.com

Tel: 6123263284

Fax: 6122933841

Bioworld technology, co. Ltd.

Add: No 9, weidi road Qixia District Nanjing, 210046, P. R. China.

Email: info@biogot.com

Tel: 0086-025-68037686

Fax: 0086-025-68035151