

## TLK1 (phospho-S743) polyclonal antibody

Catalog: BS64008

Host: Rabbit

Reactivity: Human, Mouse, Rat

### BackGround:

The Touseled-like kinases (TLK1 and TLK2, also designated PKU- $\beta$  and PKU- $\alpha$ , respectively) are the human homologs of the Touseled gene from Arabidopsis thaliana, which encodes a Serine/Threonine kinase that is necessary for proper organ morphogenesis. Both TLKs contain a nuclear localization signal and a predicted coiled-coil region in the N-terminal domain. TLK is ubiquitously expressed, and is prevalent in mouse testis, especially in pachytene spermatocytes and round spermatids. It displays a propensity to dimerize through an interaction between its coiled-coil structure and is able to autophosphorylate, as well as phosphorylate exogenous substrates. TLK1 and TLK2 are regulated by the cell cycle, showing maximum activity during S phase. Subsequently, they are thought to regulate the development of multicellular organisms, including playing a key role in spermatogenesis, through a series of phosphorylations.

### Product:

1mg/ml in PBS with 0.1% Sodium Azide, 50% Glycerol.

### Molecular Weight:

~ 86 kDa

### Swiss-Prot:

Q9UKI8

### Purification&Purity:

The antibody was affinity-purified from rabbit antiserum by affinity-chromatography using epitope-specific immunogen and the purity is > 95% (by SDS-PAGE).

### Applications:

WB: 1:500~1:1000

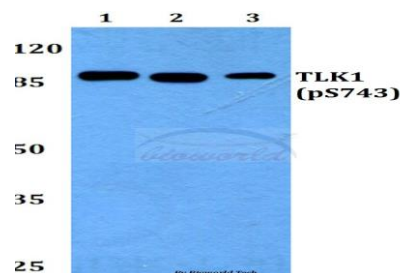
### Storage&Stability:

Store at 4 °C short term. Aliquot and store at -20 °C long term. Avoid freeze-thaw cycles.

### Specificity:

p-TLK1 (S743) polyclonal antibody detects endogenous levels of TLK1 protein only when phosphorylated at Ser743.

### DATA:



Western blot (WB) analysis of p-TLK1 (S743) polyclonal antibody at 1:500 dilution

Lane1:MCF-7 whole cell lysate

Lane2:Rat brain tissue lysate

Lane3:H9C2 whole cell lysate

### Note:

For research use only, not for use in diagnostic procedure.

### Bioworld Technology, Inc.

Add: 1660 South Highway 100, Suite 500 St. Louis Park, MN 55416, USA.

Email: [info@bioworld.com](mailto:info@bioworld.com)

Tel: 6123263284

Fax: 6122933841

### Bioworld technology, co. Ltd.

Add: No 9, weidi road Qixia District Nanjing, 210046, P. R. China.

Email: [info@biogot.com](mailto:info@biogot.com)

Tel: 0086-025-68037686

Fax: 0086-025-68035151